

NOTICE TO MARINERS

Notice of activities associated with operations on Beatrice Offshore Wind Farm

Date of Issue	15/01/2021	Notice Number	NTM-BE-00011-Rev-01
---------------	------------	---------------	----------------------------

Notification of Walk to Work Operations within BOWL

1. Contact Details for Marine Coordination and Fisheries Liaison

The following contact can provide more information if required:

Telephone Number (Day Operations)	+44 (0) 2392 272104
Emergency Contact (24/7)	+44 (0) 7342 028207
Email for Marine Coordinator	MC.Bowl@sse.com
Address	Grey Coast Building Harbour Quay WICK Caithness KW1 5ET

For all fisheries enquiries, please contact the parties listed below:

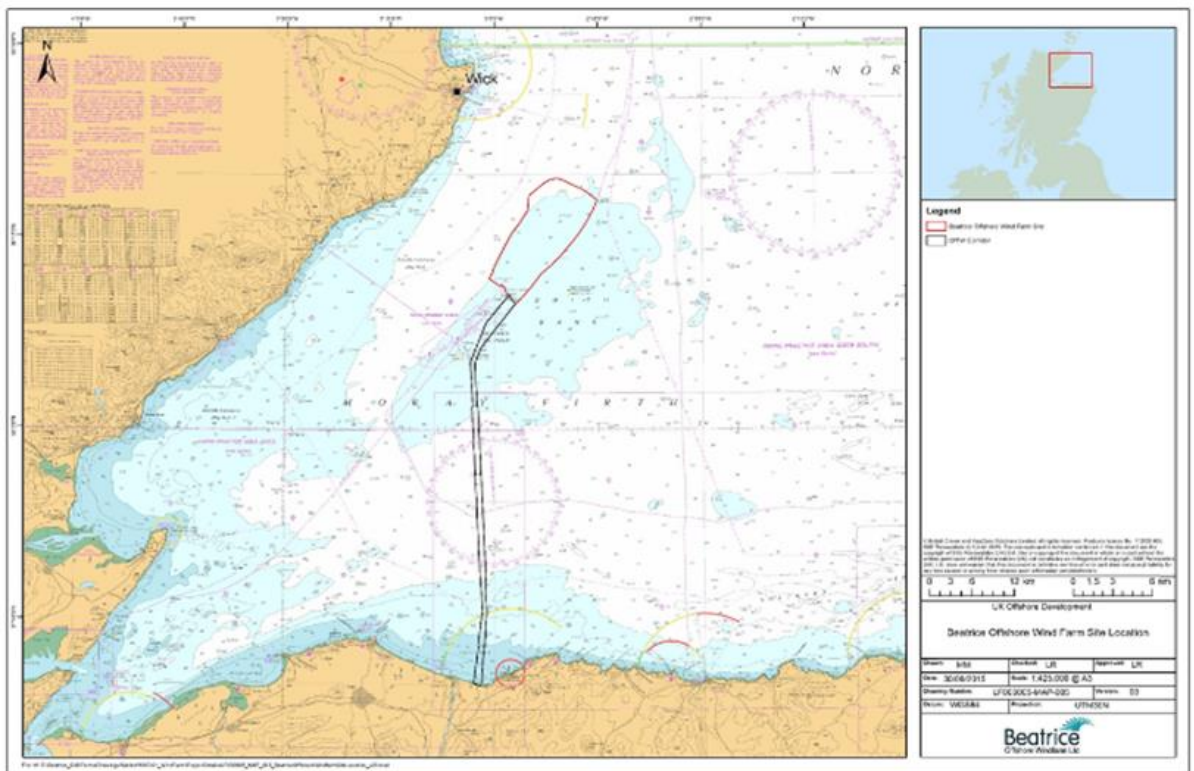
Primary Contact	Alex Winrow-Giffin - alex@brownmay.com +44 (0) 7760 160039
Secondary Contact	John Watt – john.watt@brownmay.com +44 (0) 7590 880746
Address	Brown and May Marine Progress Way Mid Suffolk Business Park Eye, Suffolk IP23 7HU

2. Area of Planned Activity

Walk to work operations will take place within the BOWL site on all WTG's and Offshore Transmission Modules. Work will commence on the 28th January and will last for circa forty-four days, dependant on weather conditions.

The Beatrice windfarm is located approximately 11nm SE of wick. The boundary of which has been outlined in red in Fig 1 below.

FIG 1



3. Activity Description

On behalf of BOWL the M.V Seaway Moxie will conduct walk to work operations using a personnel transfer gangway system for the transfer of technicians and cargo to 84 wind turbine generators and two Offshore Transmission Modules, the positions (wgs84) of the working locations are listed in Table 1 and displayed on fig 2.

FIG 2

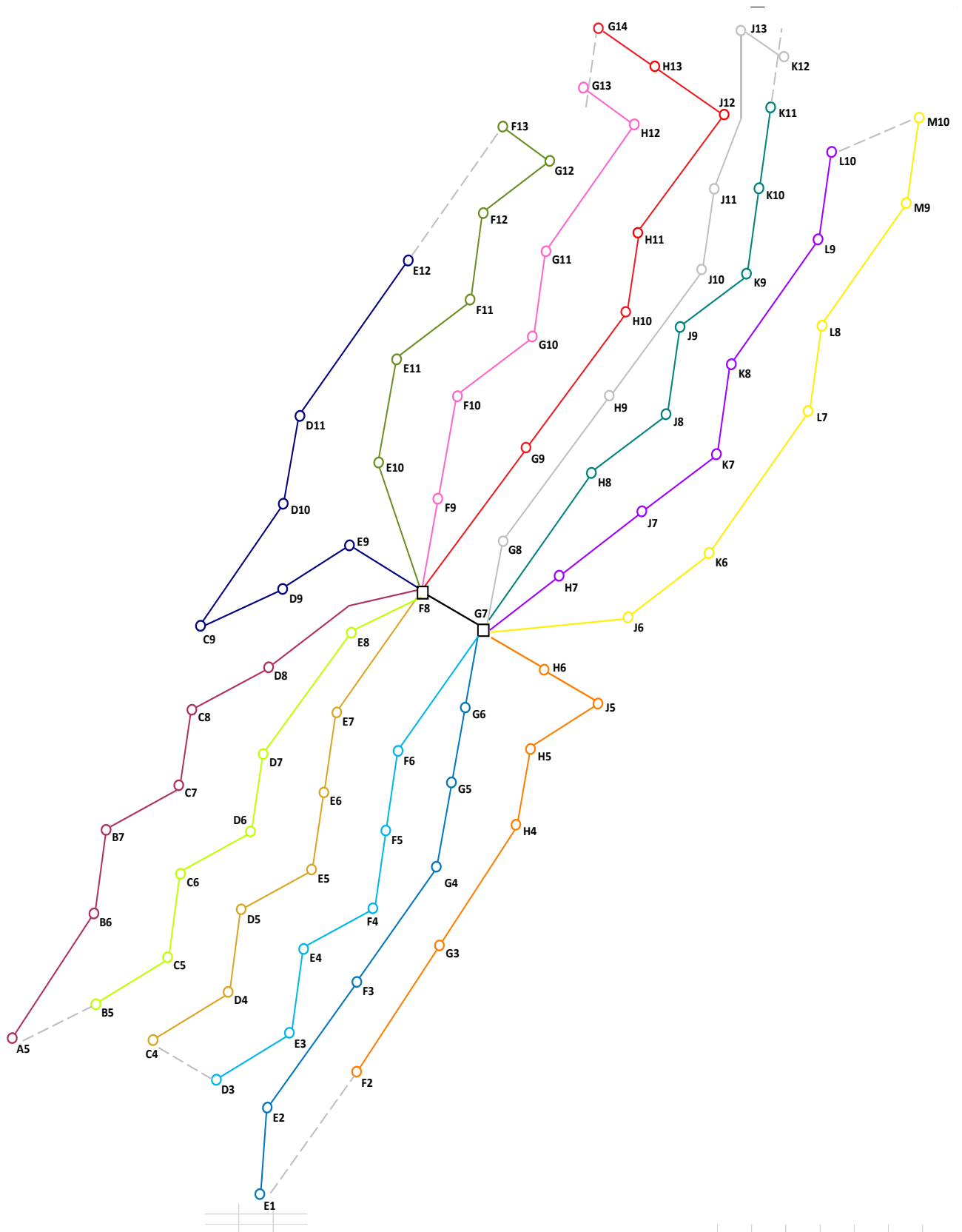


Table 1 – WTG & OTM positions

Location ID	Latitude	Longitude
BE-B05	58° 12.687' N	2° 58.873' W
BE-C04	58° 12.324' N	2° 57.931' W
BE-C05	58° 12.902' N	2° 57.749' W
BE-C06	58° 13.524' N	2° 57.541' W
BE-D03	58° 12.005' N	2° 56.986' W
BE-D04	58° 12.497' N	2° 56.834' W
BE-D05	58° 13.117' N	2° 56.626' W
BE-E01	58° 10.899' N	2° 56.227' W
BE-E02	58° 11.470' N	2° 56.128' W
BE-E03	58° 12.090' N	2° 55.920' W
BE-E04	58° 12.712' N	2° 55.710' W
BE-E05	58° 13.333' N	2° 55.502' W
BE-E06	58° 13.954' N	2° 55.293' W
BE-F02	58° 11.685' N	2° 55.005' W
BE-F03	58° 12.306' N	2° 54.796' W
BE-F04	58° 12.927' N	2° 54.588' W
BE-F05	58° 13.548' N	2° 54.378' W
BE-F06	58° 14.168' N	2° 54.169' W
BE-G03	58° 12.563' N	2° 53.760' W
BE-G04	58° 13.142' N	2° 53.464' W
BE-G05	58° 13.762' N	2° 53.254' W
BE-G06	58° 14.384' N	2° 53.044' W
BE-H04	58° 13.356' N	2° 52.339' W
BE-H05	58° 13.977' N	2° 52.130' W
BE-H06	58° 14.598' N	2° 51.920' W
BE-J05	58° 14.192' N	2° 51.005' W
BE-J06	58° 14.812' N	2° 50.795' W
BE-B06	58° 13.308' N	2° 58.664' W
BE-B07	58° 13.929' N	2° 58.456' W
BE-C07	58° 14.144' N	2° 57.332' W
BE-C08	58° 14.766' N	2° 57.124' W
BE-C09	58° 15.386' N	2° 56.915' W
BE-D06	58° 13.739' N	2° 56.417' W
BE-D07	58° 14.359' N	2° 56.209' W
BE-D08	58° 14.981' N	2° 55.999' W
BE-D09	58° 15.602' N	2° 55.790' W
BE-D10	58° 16.223' N	2° 55.582' W
BE-E07	58° 14.575' N	2° 55.084' W
BE-E08	58° 15.196' N	2° 54.875' W
BE-E09	58° 15.817' N	2° 54.665' W
BE-G08	58° 15.625' N	2° 52.625' W
BE-H07	58° 15.219' N	2° 51.709' W
BE-H08	58° 15.840' N	2° 51.499' W
BE-J07	58° 15.433' N	2° 50.585' W
BE-J08	58° 16.055' N	2° 50.373' W
BE-K06	58° 15.027' N	2° 49.669' W
BE-K07	58° 15.648' N	2° 49.459' W
BE-L07	58° 15.862' N	2° 48.333' W
BE-A05	58° 12.471' N	2° 59.996' W

NOTICE TO MARINERS – NTM-BE-00011 – Rev - 01

Location ID	Latitude	Longitude
BE-E11	58° 17.059' N	2° 54.247' W
BE-F09	58° 16.031' N	2° 53.540' W
BE-F10	58° 16.653' N	2° 53.330' W
BE-F11	58° 17.274' N	2° 53.120' W
BE-F12	58° 17.894' N	2° 52.911' W
BE-G09	58° 16.247' N	2° 52.415' W
BE-G10	58° 16.867' N	2° 52.204' W
BE-H09	58° 16.461' N	2° 51.289' W
BE-H10	58° 17.082' N	2° 51.079' W
BE-J09	58° 16.675' N	2° 50.163' W
BE-J10	58° 17.296' N	2° 49.952' W
BE-K08	58° 16.269' N	2° 49.247' W
BE-K09	58° 16.890' N	2° 49.036' W
BE-L08	58° 16.482' N	2° 48.122' W
BE-L09	58° 17.104' N	2° 47.910' W
BE-L10	58° 17.724' N	2° 47.698' W
BE-M09	58° 17.317' N	2° 46.784' W
BE-M10	58° 17.938' N	2° 46.571' W
BE-D11	58° 16.844' N	2° 55.373' W
BE-E12	58° 17.680' N	2° 54.037' W
BE-G11	58° 17.488' N	2° 51.994' W
BE-G12	58° 18.109' N	2° 51.784' W
BE-H11	58° 17.703' N	2° 50.867' W
BE-H12	58° 18.324' N	2° 50.657' W
BE-J11	58° 17.917' N	2° 49.741' W
BE-J12	58° 18.538' N	2° 49.530' W
BE-K10	58° 17.510' N	2° 48.825' W
BE-K11	58° 18.131' N	2° 48.614' W
BE-F13	58° 18.516' N	2° 52.701' W
BE-G13	58° 18.730' N	2° 51.574' W
BE-G14	58° 19.351' N	2° 51.362' W
BE-H13	58° 18.944' N	2° 50.446' W
BE-J13	58° 19.159' N	2° 49.319' W
BE-K12	58° 18.752' N	2° 48.403' W
OTM2	58° 15.411' N	2° 53.750' W
OTM1	58° 15.004' N	2° 52.834' W

4. Vessel associated with this Activity

Seaway Moxie	
General Description and Dimensions:	Walk to Work Vessel – 74m x 17m
Call Sign:	MDBO3
MMSI:	232015469
Onshore Representative:	Michael Hill Grey Coast Building Harbour Quay WICK Caithness KW1 5ET 07741 115536 Michael.hill2@sse.com



5. General Safety Advice

All vessels engaged in activity will exhibit appropriate lights and shapes prescribed by the International Regulations for Preventing Collisions at Sea; relative to their operations. All vessels engaged in the activity will also transmit an Automatic Identification System (AIS) message.

ALL VESSELS ARE REQUESTED to give all maintenance vessels a wide berth.

MARINERS ARE REMINDED to navigate with caution and keep continued watch on VHF Ch. 70 / 16 when navigating the area.

6. Fisheries Liaison

Fisheries liaison associated with the activity will be co-ordinated by Brown and May Marine. For any commercial fishery queries please contact:

Alex Winrow-Giffin Tel Mobile +44 (0) 7760 160039 alex@brownmay.com

John Watt Tel Mobile +44 (0) 7590 880746 john.watt@brownmay.com

7. Distribution List

The distribution of this notice is as per email recipient's header. A central list of recipients is maintained by the Marine Coordinator; if you are not the appropriate recipient of these notices, or do not wish to receive the notices in the future, please contact us at the address included in Section 1 of this notice.

A copy of this notice can also be found at <https://www.beatricewind.com/>