

# NOTICE TO MARINERS

## Notice of activities associated with operations on Beatrice Offshore Wind Farm

Date of Issue	22/11/2022	Notice Number	NTM-BE-00043 REV 2
---------------	------------	---------------	--------------------

### Contact Details for Marine Coordination and Fisheries Liaison

The following contact can provide more information if required:

Telephone Number (Day Operations)2	+44 (0) 2392 272104
Emergency Contact (24/7)	+44 (0) 7342 028207
Email for Marine Coordinator	<a href="mailto:MC.Bowl@sse.com">MC.Bowl@sse.com</a>
Address	Grey Coast Building Harbour Quay WICK Caithness KW1 5ET

For all fisheries enquiries, please contact the parties listed below:

Primary Contact	Alex Winrow-Giffin - <a href="mailto:alex@brownmay.com">alex@brownmay.com</a> +44 (0) 7760 160039
Secondary Contact	Willie Watt – <a href="mailto:willie.w@brownmay.com">willie.w@brownmay.com</a> +44 (0) 07897 691860
Address	Brown and May Marine Progress Way Mid Suffolk Business Park Eye, Suffolk IP23 7HU

#### 1. Area of Planned Activity

Planned maintenance involving the use of a SOV will be undertaken at Beatrice Offshore Windfarm from the 24th of November lasting for a maximum of 14 days, subject to weather. The vessel will operate at various locations within the Beatrice Windfarm.

Figure 1- Beatrice Wind Farm location in Moray Firth – Bordered in red

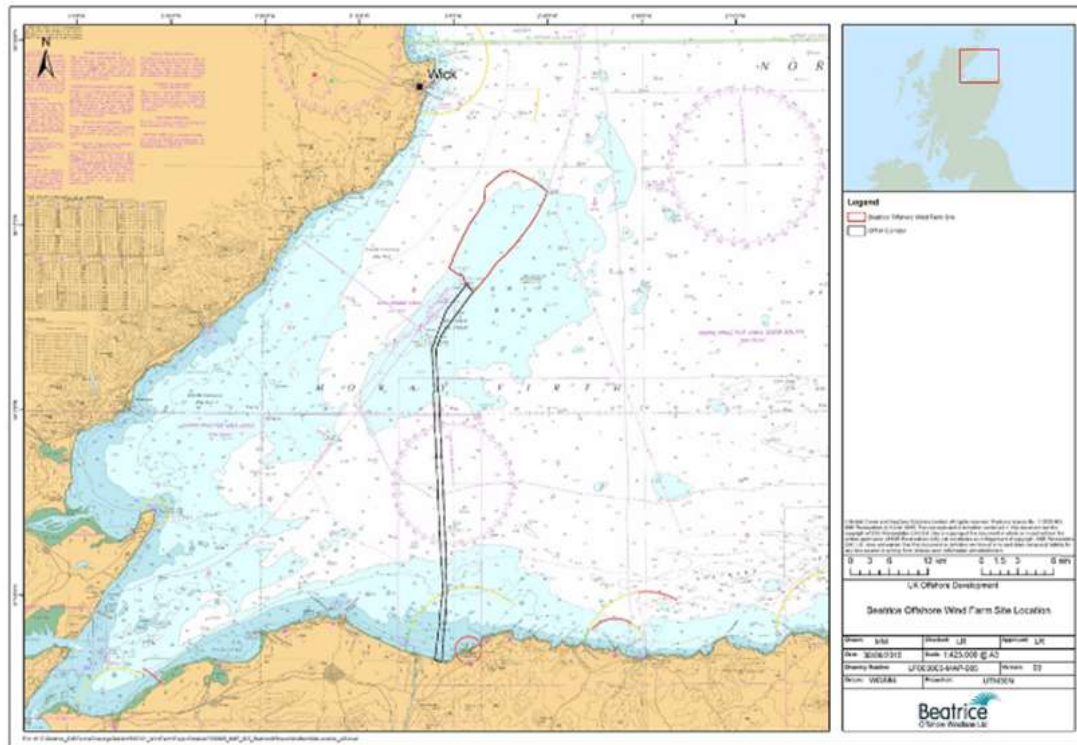
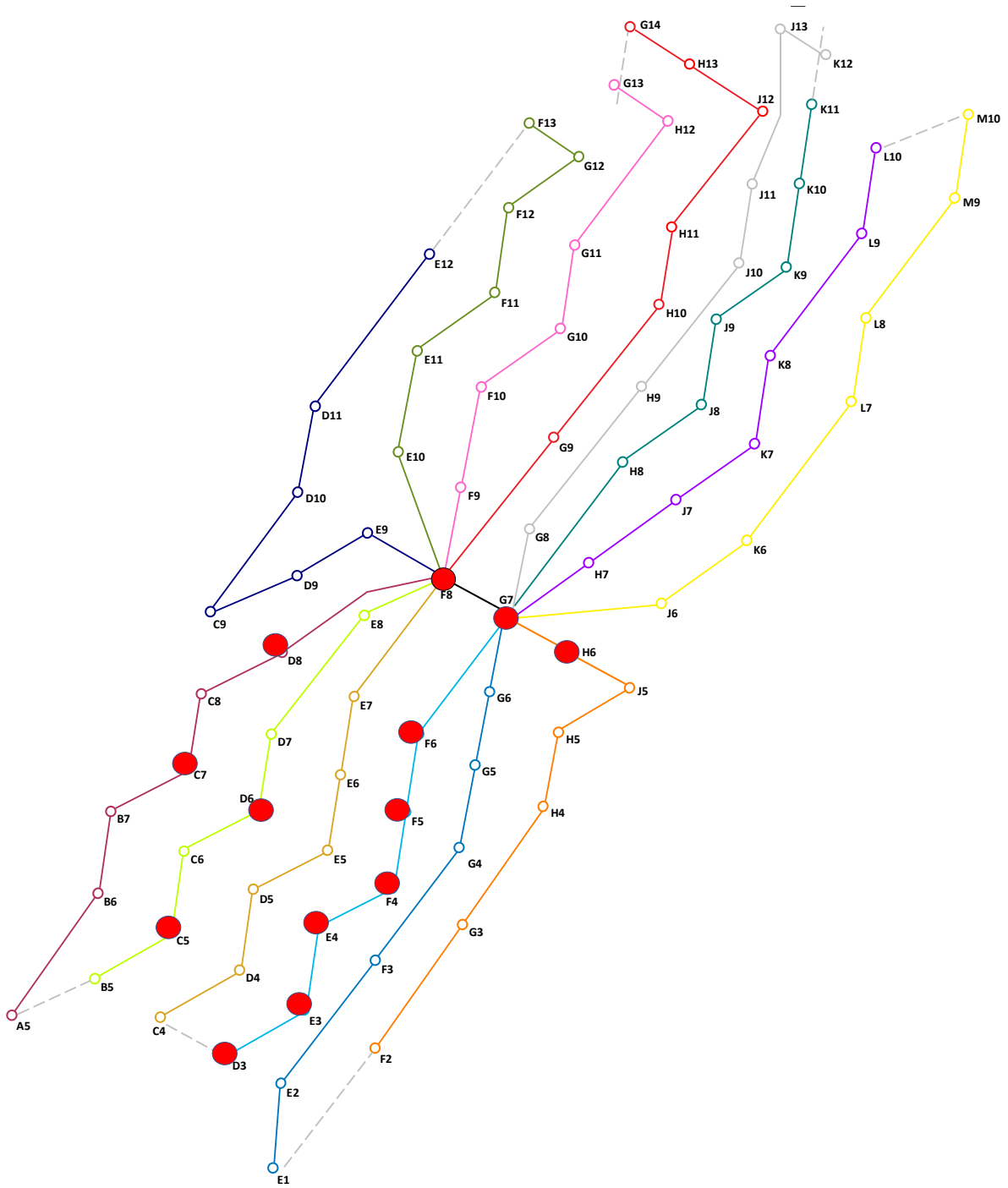


Table 1- Coordinates

Asset	Latitude	Longitude
F08	58° 15.411' N	002° 53.750' W
G07	58° 15.004' N	002° 52.834' W
C05	58° 12.902' N	002° 57.749' W
C07	58° 14.144' N	002° 57.332' W
D03	58° 11.995' N	002° 57.002' W
D06	58° 13.739' N	002° 56.417' W
D08	58° 14.981' N	002° 55.999' W
E03	58° 12.090' N	002° 55.920' W
E04	58° 12.712' N	002° 55.710' W
F04	58° 12.927' N	002° 54.588' W
F05	58° 13.548' N	002° 54.378' W
F06	58° 14.168' N	002° 54.169' W
H06	58° 14.598' N	002° 51.920' W

Figure 2- OTM Locations – Marked with Red Dot.



**2. Activity Description**

The SOV Acta Orion will be used to facilitate critical return to service within the boundaries of the Beatrice windfarm at the noted locations.

**3. Vessel associated with this Activity**

<b>Acta Orion</b>	
<b>General Description and Dimensions:</b>	SOV LOA 107.95 Breadth 16.0m
<b>Call Sign:</b>	PCEN
<b>MMSI:</b>	9750268
<b>Onshore Representative:</b>	Beatrice Offshore Windfarm Grey Coast Building Harbour Quay WICK Caithness, KW1 5ET Martin Sutherland – SSE Renewables Tel: 07794453433 Email: Martin.Sutherland@sse.com



## 4. General Safety Advice

**MARINERS ARE REMINDED** to navigate with caution and keep continued watch on VHF Ch. 70 / 16 when navigating the area.

## 5. Fisheries Liaison

Fisheries liaison associated with the activity will be co-ordinated by Brown and May Marine. For any commercial fishery queries please contact:

Alex Winrow-Giffin Tel Mobile +44 (0) 7760 160039 [alex@brownmay.com](mailto:alex@brownmay.com)

William Watt Tel Mobile +44 (0) 07897 691860 [willie.w@brownmay.com](mailto:willie.w@brownmay.com)

## 6. Distribution List

The distribution of this notice is as per email recipient's header. A central list of recipients is maintained by the Marine Coordinator; if you are not the appropriate recipient of these notices, or do not wish to receive the notices in the future, please contact us at the address included in Section 1 of this notice.

A copy of this notice can also be found at <https://www.beatricewind.com/>