

NOTICE TO MARINERS

Notice of activities associated with operations on Beatrice Offshore Wind Farm

Date of Issue	28/11/20	Notice Number	NTM-BE-00010- Rev 01
---------------	----------	---------------	----------------------

Notification of Sandeel Surveys within BOWL

Contact Details for Marine Coordination and Fisheries Liaison

The following contact can provide more information if required:

Telephone Number (Day Operations)	+44 (0) 2392 272104
Emergency Contact (24/7)	+44 (0) 7342 028207
Email for Marine Coordinator	MC.Bowl@sse.com
Address	Grey Coast Building Harbour Quay WICK Caithness KW1 5ET

For all fisheries enquiries, please contact the parties listed below:

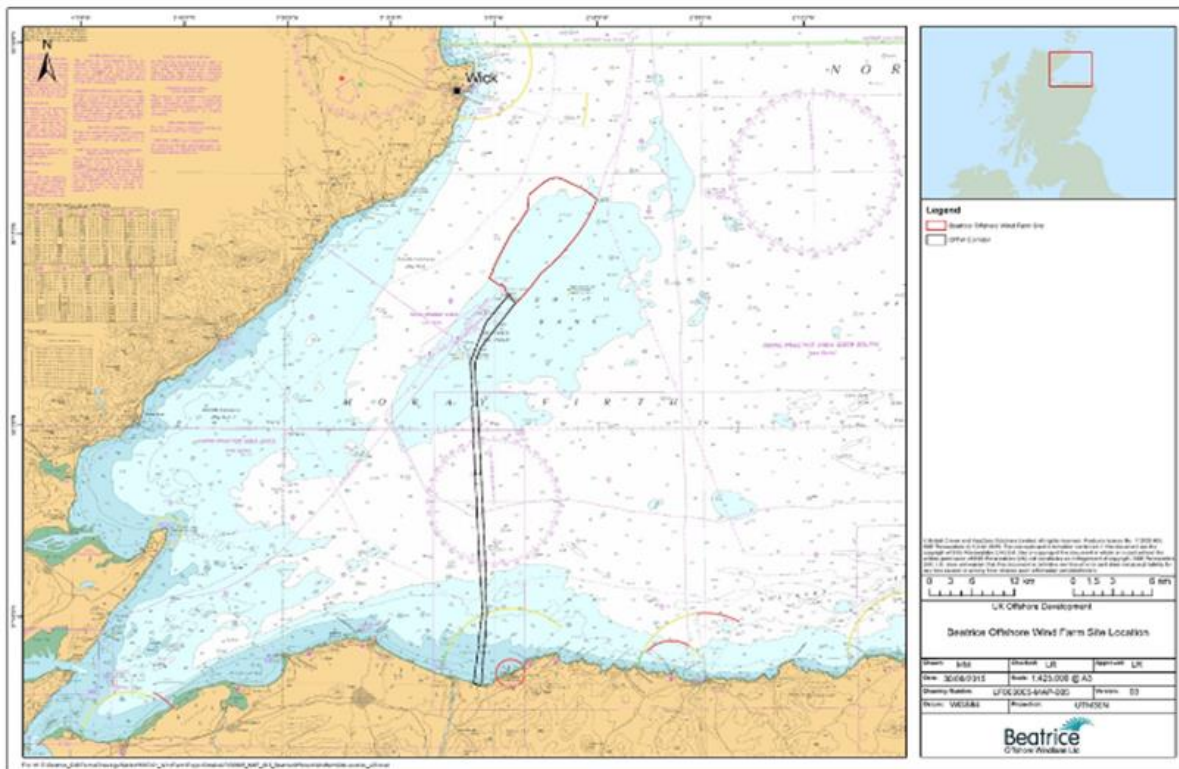
Primary Contact	Alex Winrow-Giffin - alex@brownmay.com +44 (0) 7760 160039
Secondary Contact	John Watt – john.watt@brownmay.com +44 (0) 7590 880746
Address	Brown and May Marine Progress Way Mid Suffolk Business Park Eye, Suffolk IP23 7HU

1. Area of Planned Activity

Sandeel surveys are to take place within the confines of the Beatrice Windfarm. The Sandeel survey trawls are evenly distributed, across the wind farm site. The exact directions of the trawl runs will to some extent be determined by weather and tide conditions at time of survey, however we'll be working around any fishing gear in the area.

The Beatrice windfarm is located approximately 11nm SE of Wick. The boundary of which has been outlined in red in Fig 1. Below

Fig. 1




2. Activity Description

Sandeel surveys will be conducted within the wind farm site between 8th and 22nd December 2020. Surveys will be carried out at night, using a modified scallop dredge.

3. Vessel associated with this Activity

Fishing Vessel Reaper WK 83	
General Description and Dimensions:	Fishing Vessel Reaper WK 83 18m length 7m breadth
Call Sign:	MFIX5
MMSI:	232022358

Onshore Representative:	Joe Deimel Grey Coast Building Harbour Quay WICK Caithness KW1 5ET joseph.deimel@sse.com +44 (0) 7500912797
	

4. General Safety Advice

All vessels engaged in activity will exhibit appropriate lights and shapes prescribed by the International Regulations for Preventing Collisions at Sea; relative to their operations. All vessels engaged in the activity will also transmit an Automatic Identification System (AIS) message.

MARINERS ARE REMINDED to navigate with caution and keep continued watch on VHF Ch. 70 / 16 when navigating the area.

5. Fisheries Liaison

Fisheries liaison associated with the activity will be co-ordinated by Brown and May Marine. For any commercial fishery queries please contact:

Alex Winrow-Giffin Tel Mobile +44 (0) 7760 160039 alex@brownmay.com

John Watt Tel Mobile +44 (0) 7590 880746 john.watt@brownmay.com

6. Distribution List

The distribution of this notice is as per email recipient's header. A central list of recipients is maintained by the Marine Coordinator; if you are not the appropriate recipient of these notices, or do not wish to receive the notices in the future, please contact us at the address included in Section 1 of this notice.

A copy of this notice can also be found at <https://www.beatricewind.com/>