

NOTICE TO MARINERS

Notice of activities associated with operations on Beatrice Offshore Wind Farm

Date of Issue	03/11/2020	Notice Number	NTM-BE-00009-Rev 02	
---------------	------------	---------------	------------------------	--

Rock placement on exposed export cable section

Contact Details for Marine Coordination and Fisheries Liaison

The following contact can provide more information if required:

Telephone Number (Day Operations)	+44 (0) 2392 272104
Emergency Contact (24/7)	+44 (0) 7342 028207
Email for Marine Coordinator	MC.Bowl@sse.com
Address	Grey Coast Building Harbour Quay WICK Caithness KW1 5ET

For all fisheries enquiries, please contact the parties listed below:

Primary Contact	Alex Winrow-Giffin - alex@brownmay.com +44 (0) 7760 160039
Secondary Contact	John Watt – john.watt@brownmay.com +44 (0) 7590 880746
Address	Brown and May Marine Progress Way Mid Suffolk Business Park Eye, Suffolk IP23 7HU

1. Area of Planned Activity

Rock placement operations will be undertaken to cover a short area (4metres) of partial exposure of Export Cable EC2 (shown in Fig 2).

This position is centred on 57°57.570'N 003°02.409'W ((WGS84) as shown in Fig1).

This work will be undertaken by Nexans AS on behalf of BOWL.

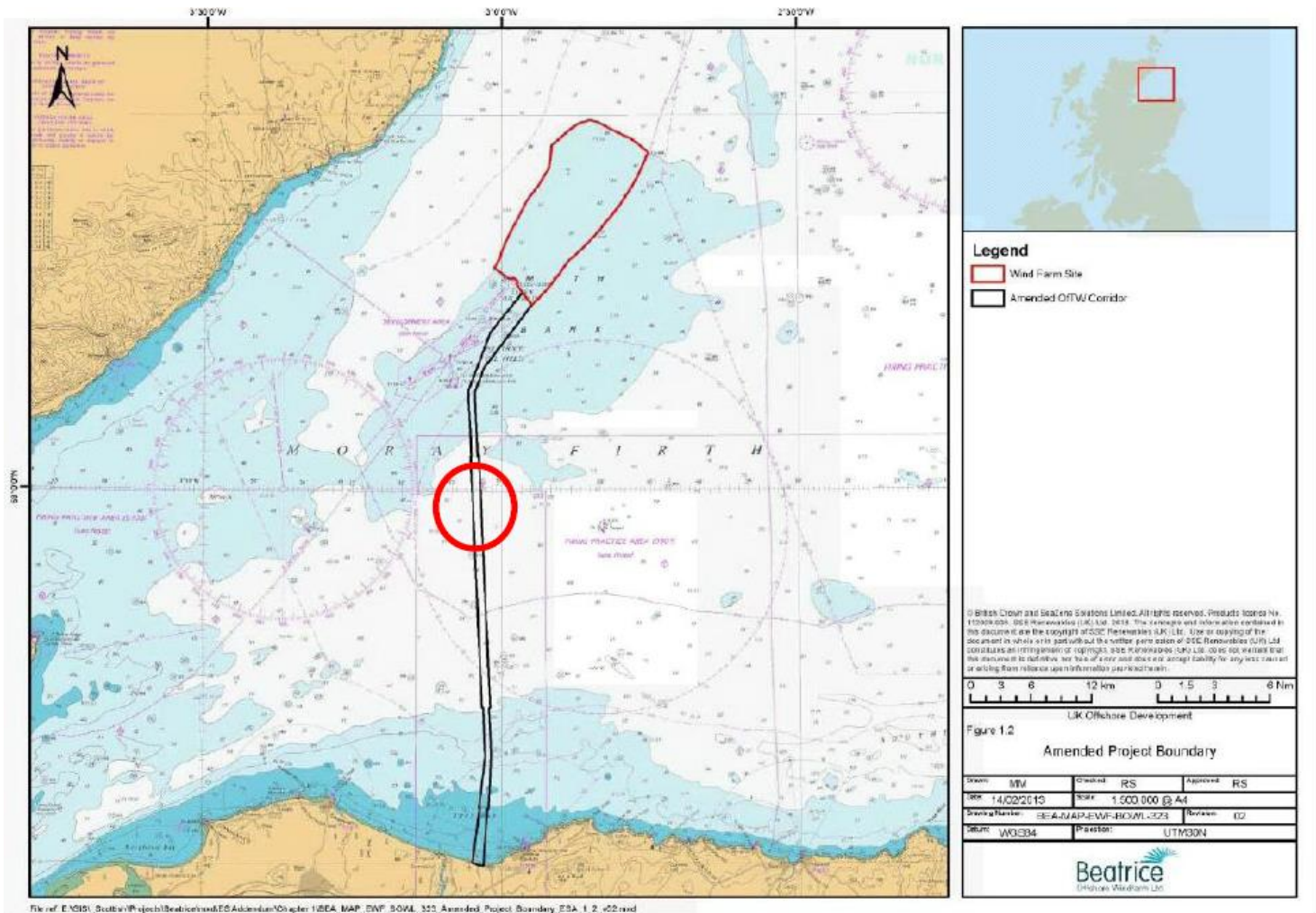


Fig 1. Location of Beatrice OWF and export cable route with area of exposed cable highlighted

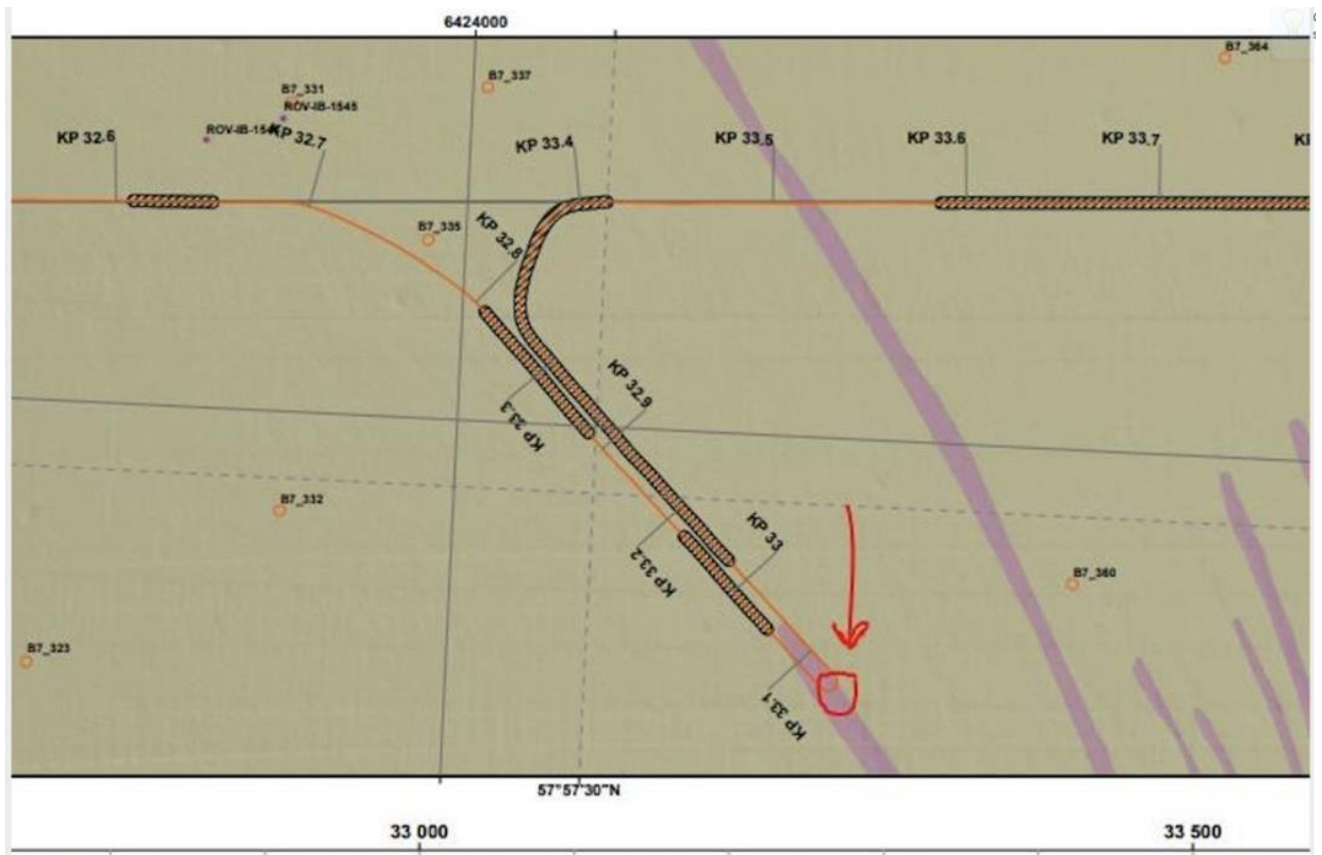


Fig 2. Location of exposed Cable on EC2

Table 1 – Position of Proposed Rock Placement

Latitude	Longitude
57°57.570 N	003°02.409 W

2. Activity Description

On behalf of Beatrice Offshore Windfarm Ltd, MV Olympic Artemis will install loose rock (100mm down) with a target coverage of at least 0.5 metres over a four-metre section of exposed export cable in accordance with cable burial design criteria followed by an as-installed survey (visual, video and still pictures with MBES or similar). Loose rock will be craned to the sea floor using 1m³ bags that will release the rock once in the correct position. All bags will be retrieved back to the vessel and removed from site

Work commencement date is 05/11/2020 duration 24 hrs or 72 hrs allowing for weather.

During this operation the MV Olympic Artemis will be restricted in its ability to manoeuvre and will be displaying the appropriate lights and day signals. All vessels are there for requested to give a wide berth when passing.

At present the MFV Reaper is acting as a guard vessel at this location, further information is available in previously issued Beatrice notice to mariners NTM-BE-00005 - Export Cable Guard Vessel. MFV Reaper will remain on location throughout operations until the partial exposure has been proven to be satisfactorily covered.

3. Vessel associated with this Activity

Olympic Artemis	
General Description and Dimensions:	Multi-Purpose Platform supply vessel – 87.75m x 19.2
Call Sign:	LAFV8
MMSI:	257040610
Onshore Representative:	Beatrice Offshore Windfarm Grey Coast Building Harbour Quay WICK Caithness, KW1 5ET Martin Sutherland – SSE Renewables Tel: 07384241258 Email: Martin.Sutherland@sse.com



4. General Safety Advice

All vessels engaged in activity will exhibit appropriate lights and shapes prescribed by the International Regulations for Preventing Collisions at Sea; relative to their operations. All vessels engaged in the activity will also transmit an Automatic Identification System (AIS) message.

ALL VESSELS ARE REQUESTED to give all maintenance vessels a wide berth.

MARINERS ARE REMINDED to navigate with caution and keep continued watch on VHF Ch. 70 / 16 when navigating the area.

5. Fisheries Liaison

Fisheries liaison associated with the activity will be co-ordinated by Brown and May Marine. For any commercial fishery queries please contact:

Alex Winrow-Giffin Tel Mobile +44 (0) 7760 160039 alex@brownmay.com

John Watt Tel Mobile +44 (0) 7590 880746 john.watt@brownmay.com

6. Distribution List

The distribution of this notice is as per email recipient's header. A central list of recipients is maintained by the Marine Coordinator; if you are not the appropriate recipient of these notices, or do not wish to receive the notices in the future, please contact us at the address included in Section 1 of this notice.

A copy of this notice can also be found at <https://www.beatricewind.com/>