

# NOTICE TO MARINERS

## Notice of activities associated with operations on Beatrice Offshore Wind Farm

Date of Issue	01/09/2022	Notice Number	NTM-BE-00033 Rev02
---------------	------------	---------------	--------------------

### **BOWL R.O.V Subsea Survey using Glomar Worker.**

#### **Contact Details for Marine Coordination and Fisheries Liaison**

The following contact can provide more information if required:

Telephone Number (Day Operations)2	+44 (0) 2392 272104
Emergency Contact (24/7)	+44 (0) 7342 028207
Email for Marine Coordinator	<a href="mailto:MC.Bowl@sse.com">MC.Bowl@sse.com</a>
Address	Grey Coast Building Harbour Quay WICK Caithness KW1 5ET

For all fisheries enquiries, please contact the parties listed below:

Primary Contact	Alex Winrow-Giffin - <a href="mailto:alex@brownmay.com">alex@brownmay.com</a> +44 (0) 7760 160039
Secondary Contact	John Watt – <a href="mailto:john.watt@brownmay.com">john.watt@brownmay.com</a> +44 (0) 7590 880746
Address	Brown and May Marine Progress Way Mid Suffolk Business Park Eye, Suffolk IP23 7HU

#### **1. Area of Planned Activity**

An inspection campaign using ROV intervention will take place within the BOWL site using the vessel Glomar Worker. Inspections will be performed on all turbine and substation locations across the site. A visual representation of the locations is provided in Figure 1. Works are due to recommence from the 12<sup>th</sup> of September for a duration of circa 14 days, weather conditions dependant.

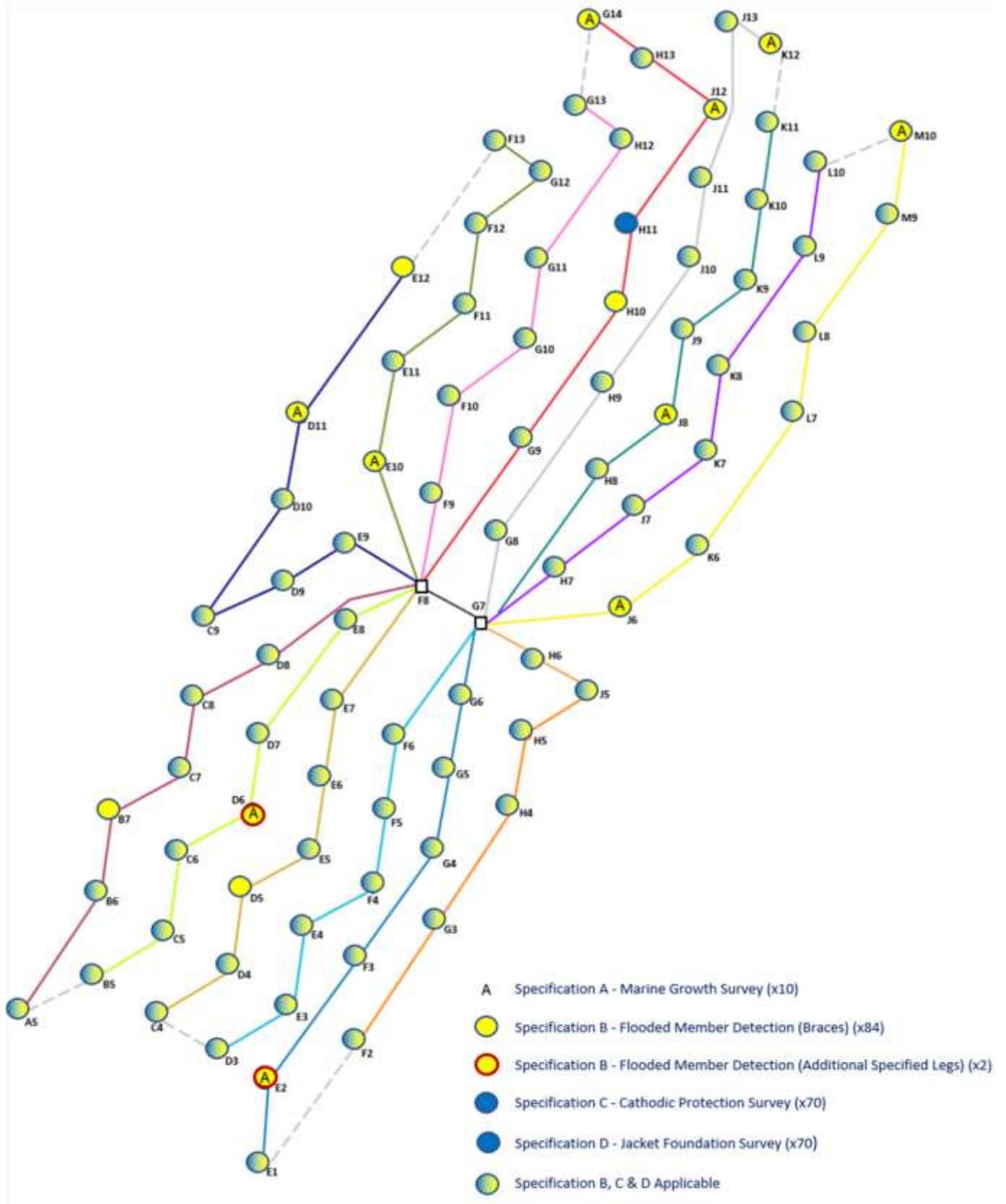


Figure 1- BOWL Inspection Campaign Locations

The Beatrice windfarm is located approximately 11nm SE of Wick. The boundary of which has been outlined in red in figure 2.

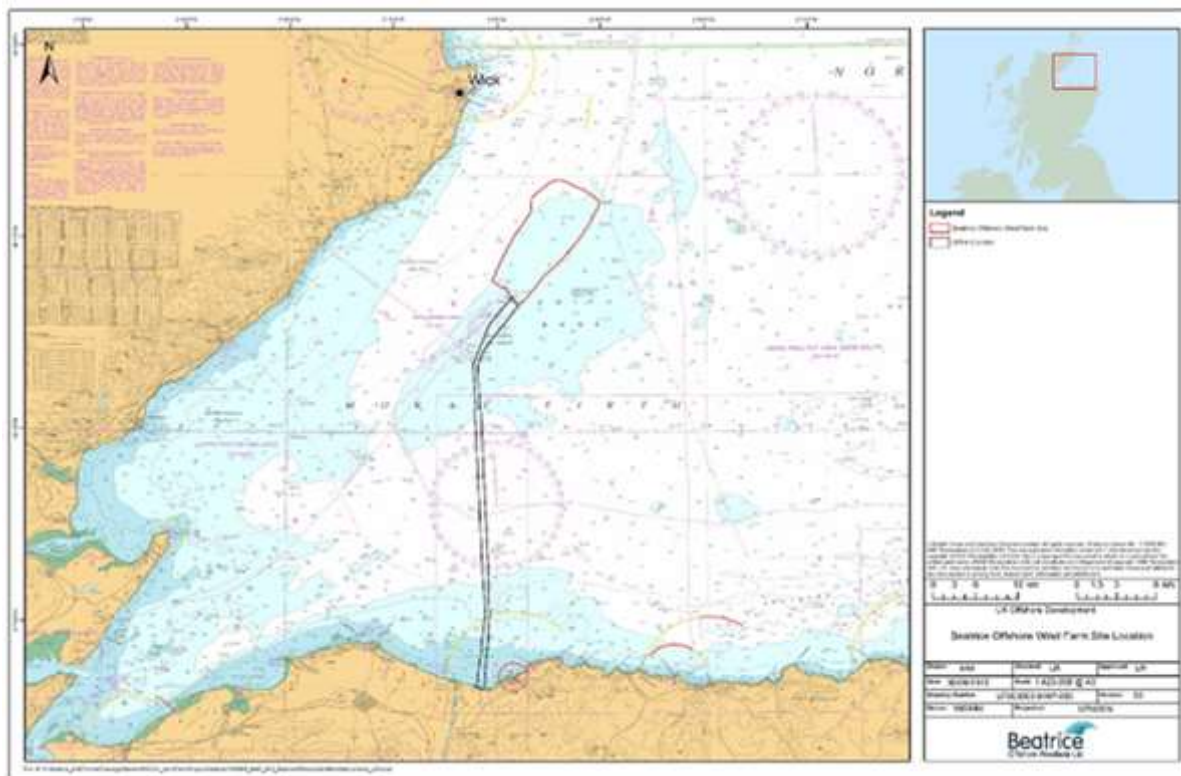


Figure 2- BOWL site map

**2. Activity Description**

On behalf of BOWL, vessel Glomar Worker will conduct an ROV inspection campaign on all turbine and substation locations on site. It should be noted that the Glomar Worker will operate in DP/II mode during inspection activities and will have restricted manoeuvrability.

**3. Vessel associated with this Activity**

MV Glomar Worker	
<b>General Description and Dimensions:</b>	60.0 Meter Multipurpose Vessel
<b>Call Sign:</b>	3EKK8
<b>MMSI:</b>	352110000
<b>Onshore Representative:</b>	Beatrice Offshore Windfarm Grey Coast Building Harbour Quay WICK Caithness, KW1 5ET Ruth Nicol – SSE Renewables Tel: +44(0) 7341 727995

Email: ruth.nicol@sse.com



#### 4. General Safety Advice

All vessels engaged in the campaign will exhibit appropriate lights and shapes prescribed by the International Regulations for Preventing Collisions at Sea, relative to their operations. All vessels engaged in the inspections will also transmit an Automatic Identification System (AIS) message.

**ALL VESSELS ARE REQUESTED** to give Glomar Worker a wide berth whilst operating due to being restricted in her ability to manoeuvre during ROV operations.

**MARINERS ARE REMINDED** to navigate with caution and keep continued watch on VHF Ch. 70 / 16 when navigating the area.

#### 5. Fisheries Liaison

Fisheries liaison associated with the activity will be co-ordinated by Brown and May Marine. For any commercial fishery queries please contact:

Alex Winrow-Giffin Tel Mobile +44 (0) 7760 160039 [alex@brownmay.com](mailto:alex@brownmay.com)

John Watt Tel Mobile +44 (0) 7590 880746 [john.watt@brownmay.com](mailto:john.watt@brownmay.com)

#### 6. Distribution List

## NOTICE TO MARINERS – NTM-BE-00033 Rev02



The distribution of this notice is as per email recipient's header. A central list of recipients is maintained by the Marine Coordinator; if you are not the appropriate recipient of these notices, or do not wish to receive the notices in the future, please contact us at the address included in Section 1 of this notice.

A copy of this notice can also be found at <https://www.beatricewind.com/>