

NOTICE TO MARINERS

Notice of activities associated with operations on Beatrice Offshore Wind Farm

Date of Issue	07/11/2024	Notice Number	BE-SSE-MAR-SUV-0003
---------------	------------	---------------	---------------------

Contact Details for Marine Coordination and Fisheries Liaison

The following contact can provide more information if required:

Telephone Number (Day Operations)	+44 (0) 2392 272104
Emergency Contact (24/7)	+44 (0) 7342 028207
Email for Marine Coordinator	MC.Bowl@sse.com
Address	Grey Coast Building Harbour Quay WICK Caithness KW1 5ET

For all fisheries enquiries, please contact the parties listed below:

Primary Contact	Alex Winrow-Giffin - alex@brownmay.com +44 (0) 7760 160039
Secondary Contact	John Watt – john.watt@brownmay.com +44 (0) 7590 880746
Address	Brown and May Marine Progress Way Mid Suffolk Business Park Eye, Suffolk IP23 7HU

1. Area of Planned Activity

The area of planned activity will be at one location within the Beatrice Windfarm at WTG BE-M09 which is detailed below.

Figure 1- Beatrice Wind Farm location in Moray Firth – Bordered in red

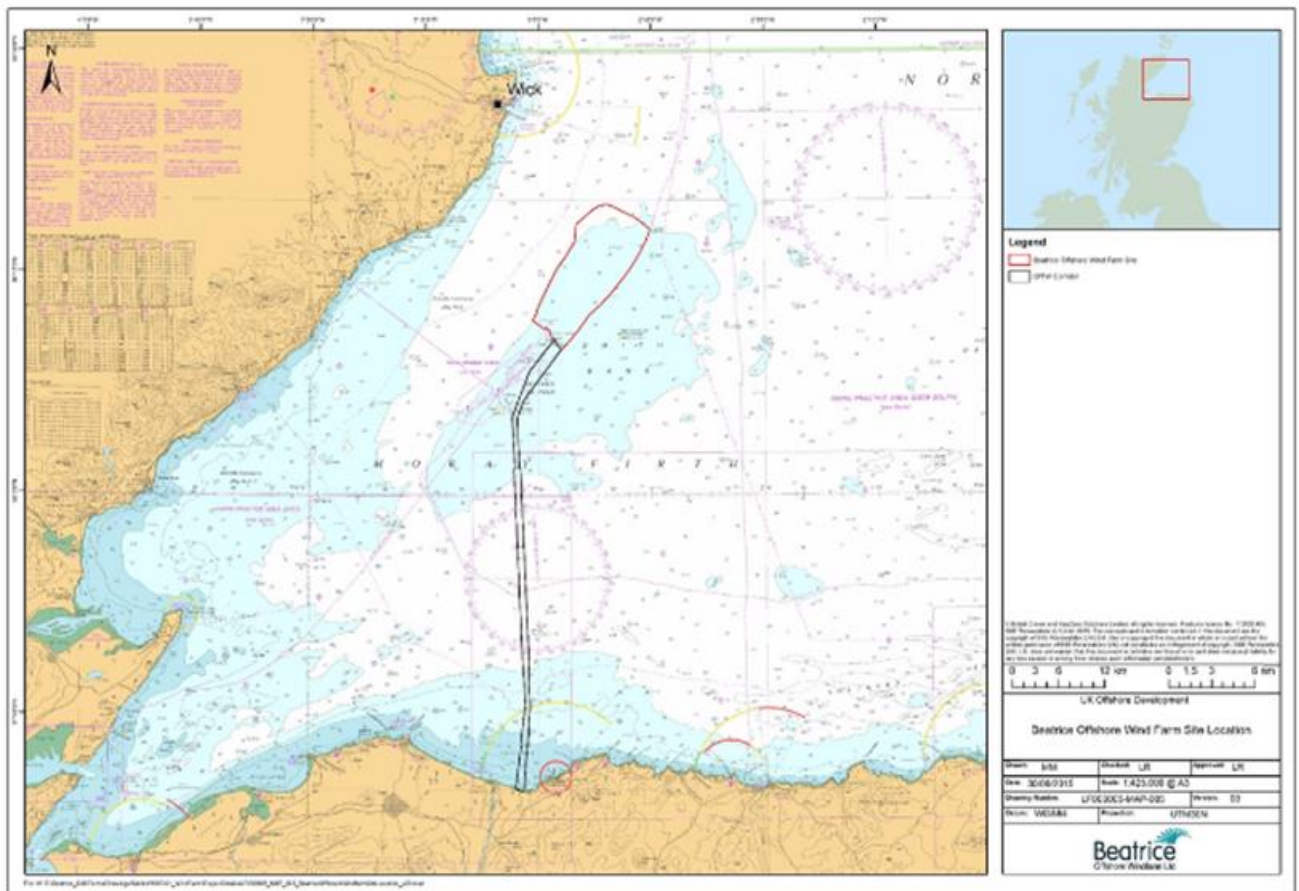
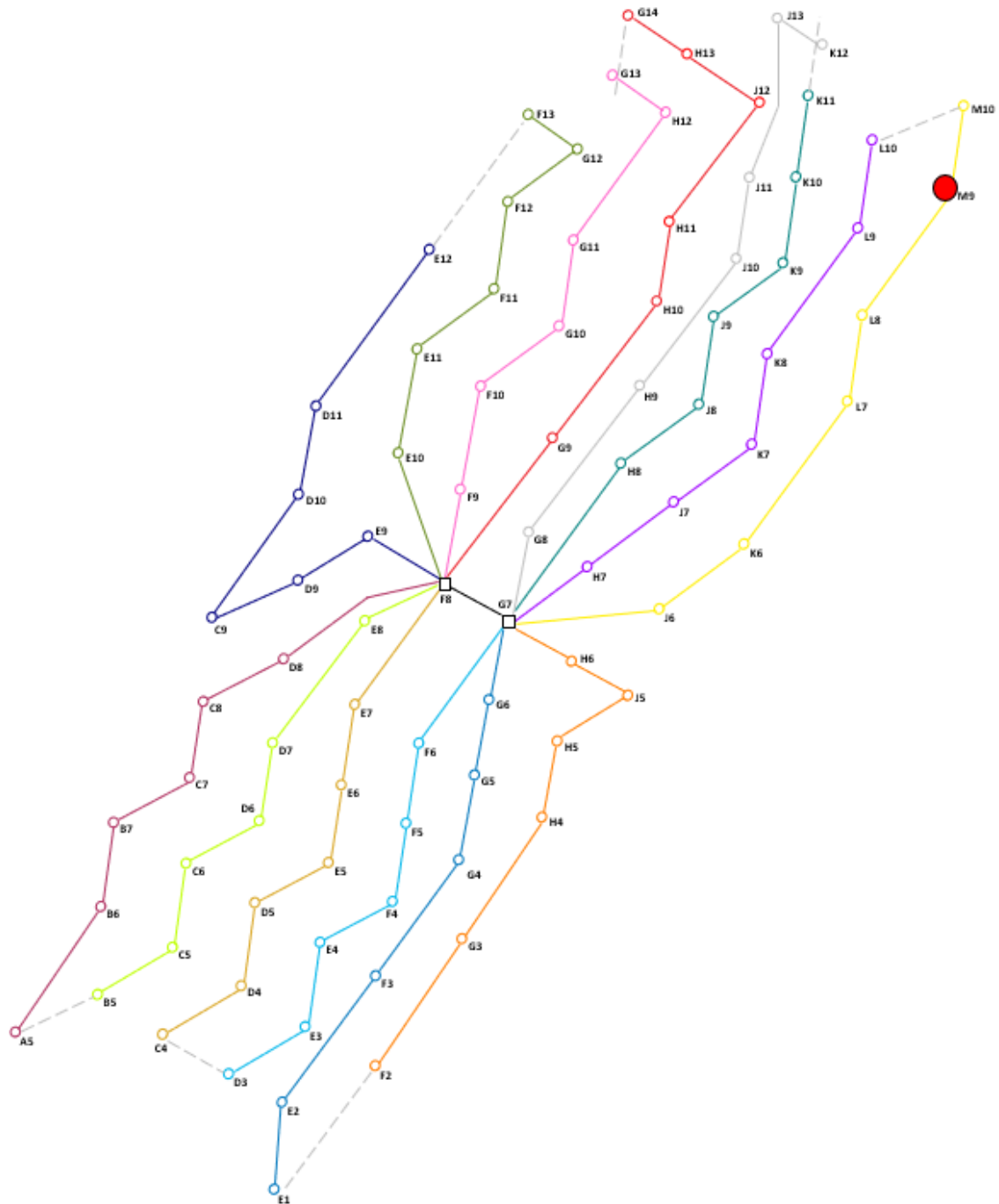


Table 1- M09 Coordinates

Asset	Latitude	Longitude
BE-M9	58° 17.317' N	002° 46.784' W

Figure 2- M09 Location within windfarm – Marked with Red Dot.



2. Activity Description

Major component repairs are to be carried out on Beatrice Windfarm involving the use of a Self-propelled Jack up vessel (Wind Orca) will be undertaken from the 04th of December lasting for approximately 21 days, subject to weather. The vessel will operate at one asset on the Beatrice Windfarm replacing the generator on WTG BE-M09.

3. Vessel associated with this Activity

Wind Orca	
General Description and Dimensions:	Jack Up Platform 161 x 49 m
Operator	Cadeler
IMO	9601326
Call Sign:	OZSB2
MMSI:	219029786
On Board Contact/Offshore Manager:	Craig Evans craig.evans@siemensgamesa.com Richie Cameron Richard.Cameron@siemensgamesa.com
Onshore Representative:	Beatrice Offshore Windfarm Grey Coast Building Harbour Quay WICK Caithness, KW1 5ET Stephanie McNeill – Siemens Gamesa Renewable Energy Limited Tel: +44 7921 884949 Email: stephanie.mcneill@siemensgamesa.com



4. General Safety Advice

On 17 March 2017 the department of Business, Energy and Industrial Strategy confirmed that BOWL is permitted to enact temporary 500 metre radius safety zones around all major maintenance works being undertaken on BOWL assets within the Windfarm.

Only vessels involved in activities related to major maintenance work are permitted to enter or remain in the safety zones while they are in force.

fishermen who have static fishing gear deployed within 500 m from the WTG where major repairs are planned (see figure 1 & 2) are requested to provide the coordinates of such deployed gear in DMS and details of whether the surface markers used are visible at all states of visibility to Alex Winrow-Griffin (Brown & May Marine) using the contact information below.

MARINERS ARE REMINDED to navigate with caution and keep continued watch on VHF Ch. 70 / 16 when navigating the area.

NOTICE TO MARINERS – BE-SSE-MAR-SUV-0003



5. Fisheries Liaison

Fisheries liaison associated with the activity will be co-ordinated by Brown and May Marine. For any commercial fishery queries please contact:

Alex Winrow-Giffin Tel Mobile +44 (0) 7760 160039 alex@brownmay.com

John Watt Tel Mobile +44 (0) 7590 880746 john.watt@brownmay.com

6. Distribution List

The distribution of this notice is as per email recipient's header. A central list of recipients is maintained by the Marine Coordinator; if you are not the appropriate recipient of these notices, or do not wish to receive the notices in the future, please contact us at the address included in Section 1 of this notice.

A copy of this notice can also be found at <https://www.beatricewind.com/>