

NOTICE TO MARINERS

Notice of activities associated with operations on Beatrice Offshore Wind Farm

Date of Issue	20.04.2020	Notice Number	NTM-BE-00004
---------------	------------	---------------	--------------

BOWL Export Cable Rock Placement Works

Contact Details for Marine Coordination and Fisheries Liaison

The following contact can provide more information if required:

Telephone Number (Day Operations)	+44 (0) 2392 272104
Emergency Contact (24/7)	+44 (0) 7342 028207
Email for Marine Coordinator	MC.Bowl@sse.com
Address	Grey Coast Building Harbour Quay WICK Caithness KW1 5EN

For all fisheries enquiries, the following is the primary contact:

Telephone Number	+44 (0) 1379872148
Mobile number	+44 (0) 7519106002
Email	alex@brownmay.com
Address	Brown and May Marine Progress Way Mid Suffolk Business Park Eye, Suffolk IP23 7HU

1. Area of Planned Activity.

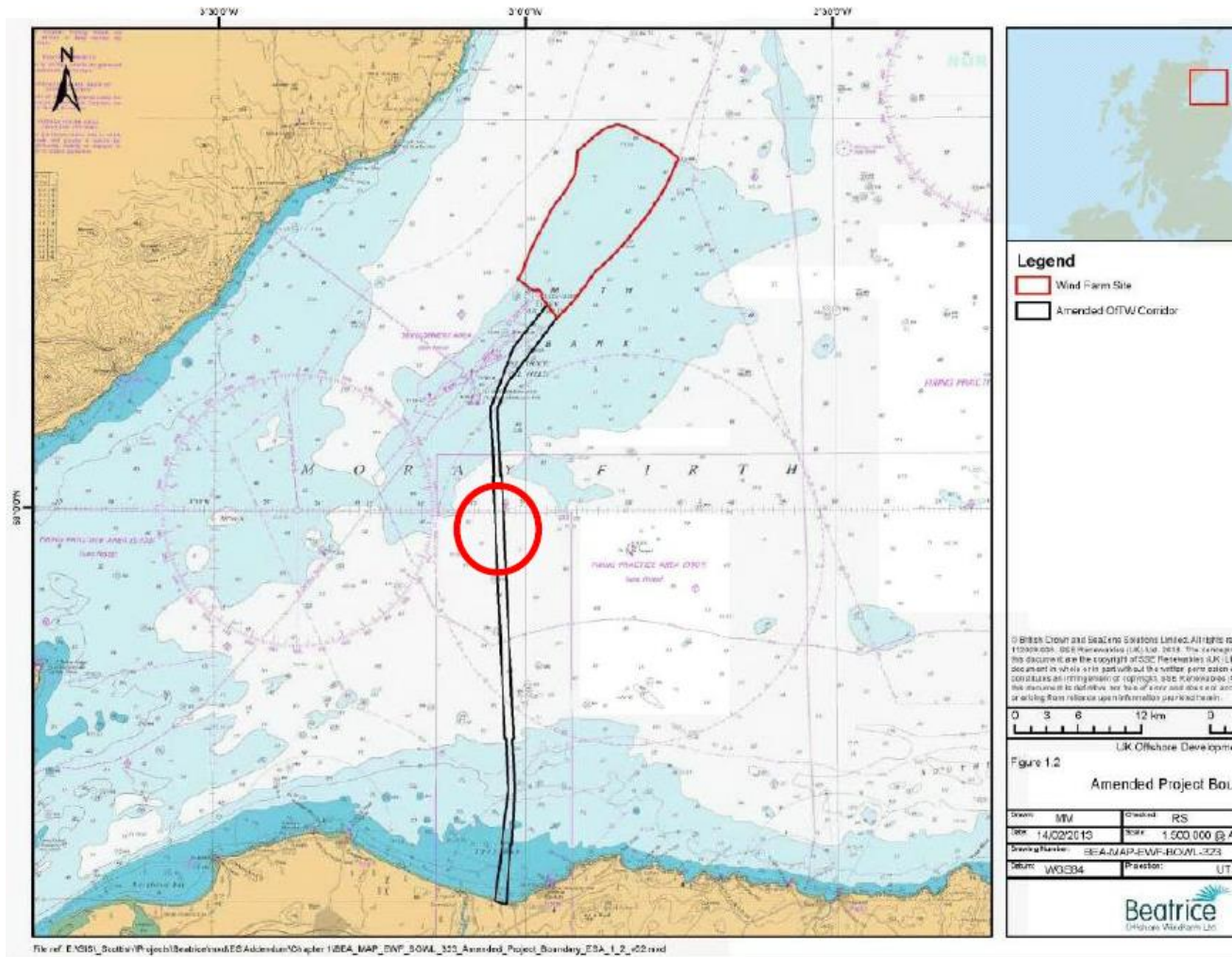
Exposed Cable

A short area (4metres) of partial exposure of Export Cable EC2 is in the vicinity of the mid cable joint at the location where the cable changes direction through 180degs (shown in Fig 2).

This position is centred on 57° 57.570'N 003° 02.409'W (WGS84).

1.

NOTICE TO MARINERS



1. Fig 1. Location of Beatrice OWF and export cable route with area of exposed cable

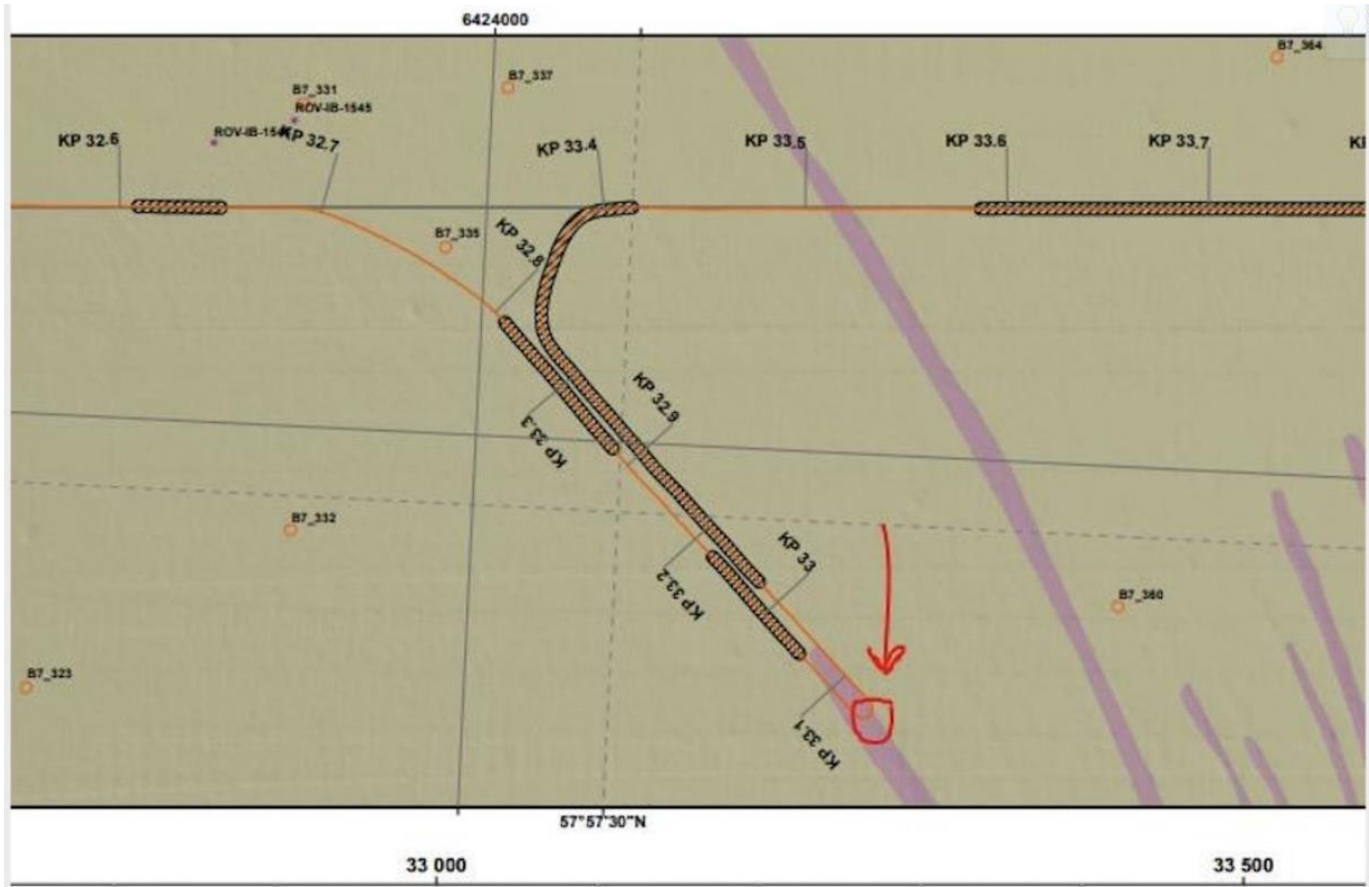


Fig 2. Location of exposed Cable on EC2

Figure 1.

Table 1

ID	Latitude	Longitude
	57°57.570 N	003°02.409 W

2. Activity Description.

On behalf of Beatrice Offshore Windfarm Ltd, MV Havila Phoenix will deploy Rock bags over an area of 4 metres on export Cable 2. The works will take place between 1st and 8th May 2020 (weather permitting) and are scheduled to take 12 hours. A further NtM will be issued once a date and time are confirmed.

3. Vessel associated with this activity.

General Description and Dimensions:	Multi-Purpose Offshore Vessel
--	-------------------------------

NOTICE TO MARINERS

	127.4m length 23.5 m breadth 10599 GT Flag - Nassau
Call Sign:	C6BD2
MMSI:	311000229
Onshore Representative:	Beatrice Offshore Windfarm Grey Coast Building Harbour Quay WICK Caithness, KW1 5EN Michael Hill – SSE Renewables Tel: 07741115536 Email: Michael.hill2@sse.com



4. General Safety Advice

All vessels engaged in the construction activity will exhibit appropriate lights and shapes prescribed by the International Regulations for Preventing Collisions at Sea; relative to their operations. All vessels engaged in the activity will also transmit an Automatic Identification System (AIS) message.

Use of Safety Zones within the Beatrice Offshore Windfarm Area:

The Secretary of State for Business, Energy and Industrial Strategy (BEIS) has approved the use of safety zones under the Energy Act 2004 for the installation of wind turbines and offshore transformer module foundations/substructures within the Beatrice Offshore Windfarm. The approval was granted on the 17th March 2017.

NOTICE TO MARINERS



The Secretary of State has declared Safety Zones under the following terms: During Operations and Maintenance

- 500 metres radius around each wind turbine, offshore transformer module and/or their substructures and foundations comprising the Beatrice Offshore Wind Farm whilst work is being performed as indicated by the presence of maintenance vessels.
- It is noted that the 500 metre safety zones will roll with the maintenance activity with no more than two maintenance vessels working at any one time. Vessels are advised that anchors associated with the maintenance vessels may extend outside of the 500-metre safety zone.

Only vessels associated with the Beatrice Offshore Wind Farm Operations and Maintenance may enter statutory Safety Zones with prior permission.

Marine Coordination centre will be responsible for monitoring and policing the Safety Zones; and can be contacted directly for advice.

Further information on the application of Safety Zones can be obtained from the Marine Coordinator. Users are advised to keep clear of maintenance activities, including Safety Zones, within the Beatrice Offshore Windfarm area in line with Marine Guidance Note 372.

ALL VESSELS ARE REQUESTED to give all maintenance vessels a wide berth.

MARINERS ARE REMINDED to navigate with caution and keep continued watch on VHF Ch. 70 / 16 when navigating the area.

5. Fisheries Liaison

Fisheries liaison associated with the activity will be co-ordinated by Brown and May Marine. For any commercial fishery queries please contact:

Alex Winrow-Giffin Tel + 44 (0)1379 872144 Mobile +44 (0)7760 160039 alex@brownmay.com

7. Distribution List

The distribution of this notice is as per email recipient's header. A central list of recipients is maintained by the Marine Coordinator; if you are not the appropriate recipient of these notices, or do not wish to receive the notices in the future, please contact us at the address included in Section 1 of this notice.

A copy of this notice can also be found at <https://www.beatricewind.com/>