

# Weekly Notice of Operations (WNoO)

## Beatrice Offshore Windfarm Limited Construction Operations



Issue Date: 12th February 2018

LF000005-WNO-013: Weekly Notice of Operations - Rev 41

### Notice of Operations at Beatrice Offshore Wind Farm

#### Work Planned for the Period 12.02.2018 to 19.02.2018

Construction of the Beatrice Offshore Wind Farm commenced on the 1<sup>st</sup> of April 2017. This notice will be updated weekly giving information on the progress and resources involved in the offshore project. The intention is to give an overview of activities and vessels involved. Should anyone have questions regarding the operations, we kindly ask you to put them forward well in advance.

Beatrice Offshore Windfarm Limited (BOWL) is developing the Beatrice Offshore Wind Farm in the 'Outer' Moray Firth on the north-western point of the Smith Bank, approximately 7 nm off the Caithness coastline. The development site will cover an approximate area of up to 130km<sup>2</sup> and will consist of 84 7MW offshore wind turbines (with a total capacity of 588MW) and two HVAC Offshore Transformer Modules (OTM). Water depths in the area range from approximately 38m below LAT in the south of the field to 60m below LAT in the north. The generated power will be transmitted to the grid via two subsea export / transmission cables with a landfall near Portgordon to the south of the field and grid connection at Blackhillock. The transmission cables will cover a route of approximately 38 nm from the wind farm boundary back to the landfall. The Beatrice Offshore Wind Farm development area is highlighted in red below, the OFTW cable corridor in black.

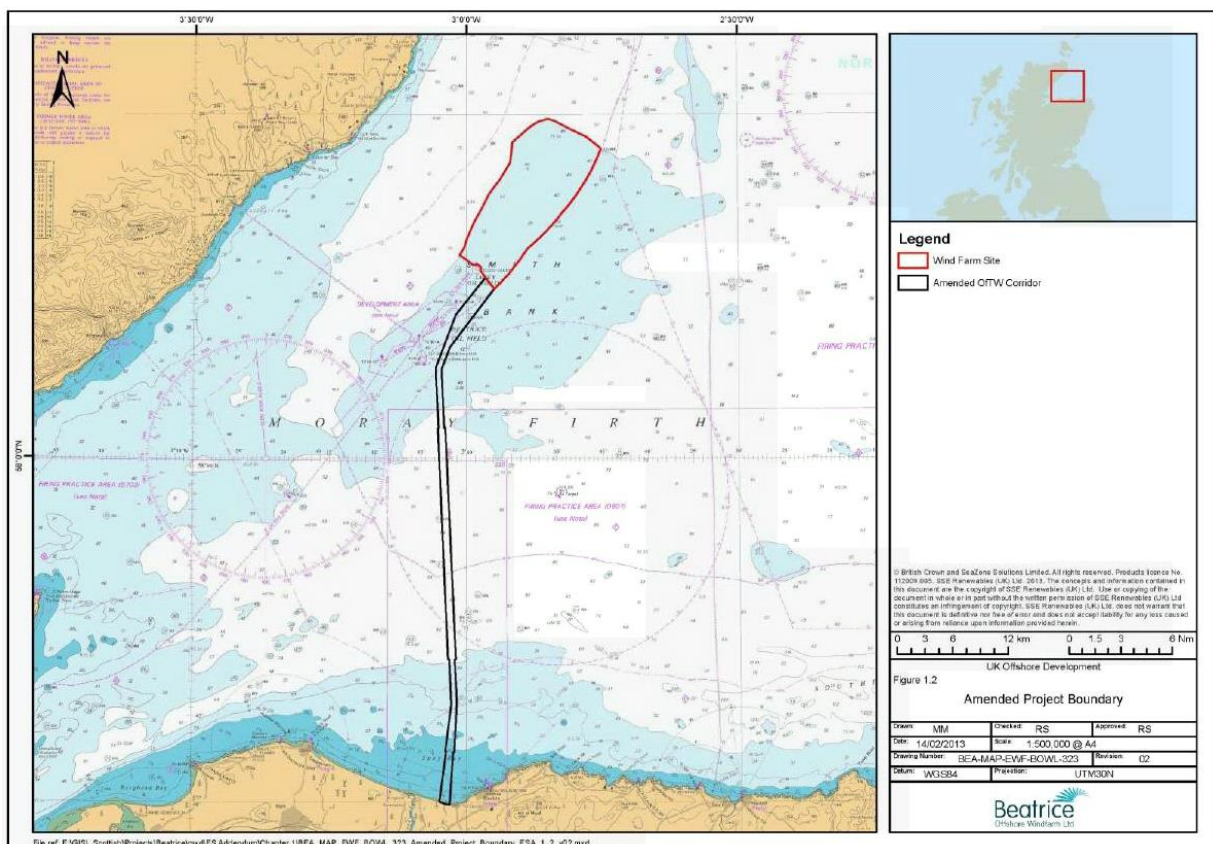


Fig. 1 Beatrice Offshore Wind Farm Location

# Weekly Notice of Operations (WNoO)

## Beatrice Offshore Windfarm Limited

### Construction Operations

---



Issue Date: 12th February 2018  
LF000005-WNO-013: Weekly Notice of Operations - Rev 41

#### 1. Contact Details for Marine Coordination

The following contact can provide more information if required. Please note that specific queries can also be addressed to the relevant vessel or shore based representative.

<b>Telephone Number</b>	+44 (0) 3302 020329
<b>Emergency Contact (24/7)</b>	+44 (0) 7342 028207
<b>Email for Marine Coordinator</b>	<a href="mailto:mc.bowl@sse.com">mc.bowl@sse.com</a>
<b>Address</b>	Unit 1 Harbour Office Wick Caithness KW1 5HA

#### 2. Ongoing Operations

##### 2.1 Beatrice Offshore Wind Farm Jacket Installation Campaign

<b>Project:</b>	Jacket Installation Campaign (See Notice to Mariners) NTM-032 Rev01
<b>Contractor:</b>	SHL
<b>Contract Purpose:</b>	To install WTG & OTM Jackets at completed piled locations within the construction site.
<b>Area:</b>	BOWL Construction Site: Jacket Locations (See Fig. 2 Table1)
<b>Deployment Dates:</b>	08 August 2017 – September 2018
<b>Deployment Vessels:</b>	HLV Oleg Strashnov, AHT Union Sovereign, Vos Prelude, Centaurus, Pegasus, Kamarina, Smit Seraya, Bremen Fighter & Britoil 120
<b>Equipment:</b>	HLV equipment, Pile cleaning equipment, Grouting equipment.

##### 2.1.1 Offshore Transmission Module Topside Installation

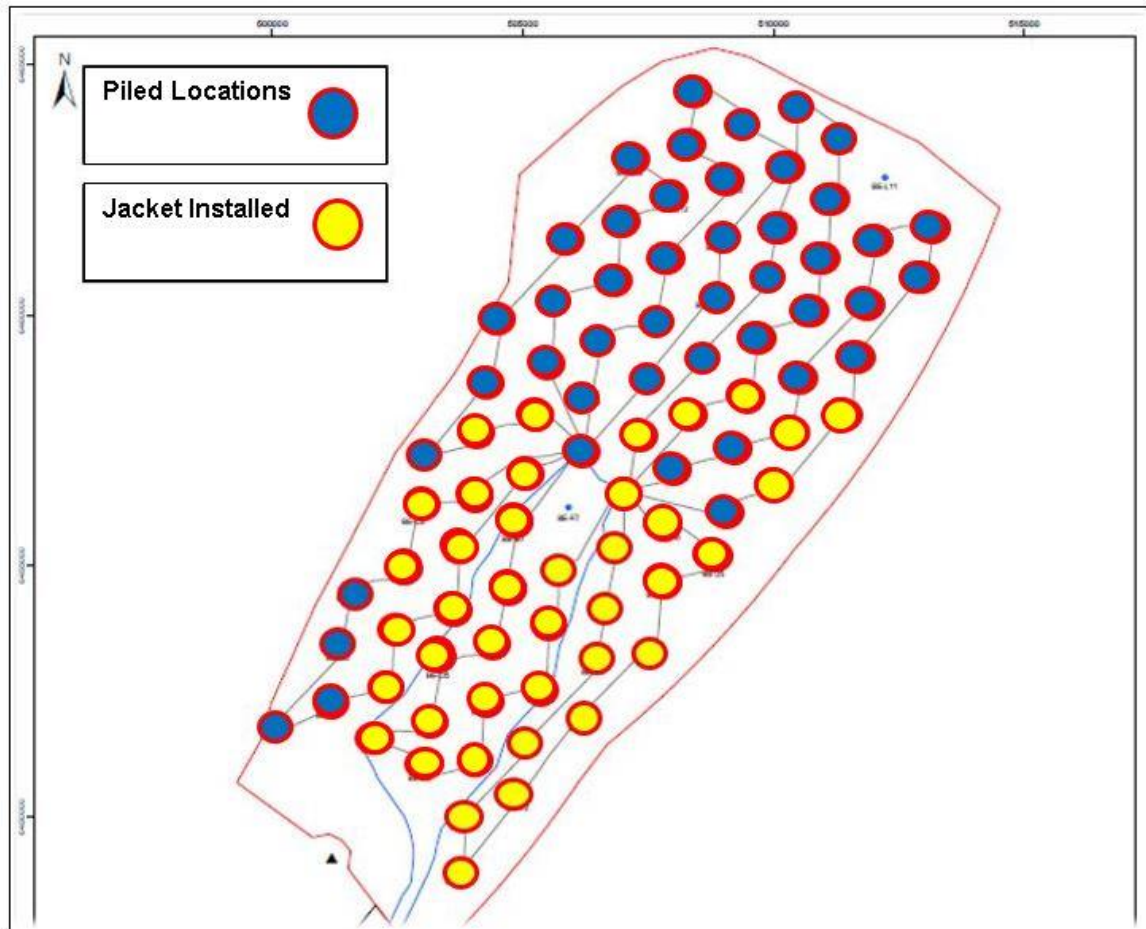
Offshore Transmission Module 1 topside installation will commence during a suitable weather window, date to be confirmed.

# Weekly Notice of Operations (WNoO)

## Beatrice Offshore Windfarm Limited Construction Operations

Issue Date: 12th February 2018

LF000005-WNO-013: Weekly Notice of Operations - Rev 41



**Fig. 2** Pile installation completed at 86 Locations

Foundation installation completed at 41 Locations

**Table 1 - WTG and OTM Location Coordinates**

Location ID	Latitude WGS84	Longitude WGS84	Piling Complete	Jacket installed
BE-A5	58° 12.471' N	002° 59.996' W	14.07.2017	
BE-B5	58° 12.687' N	002° 58.873' W	12.07.2017	
BE-B6	58° 13.308' N	002° 58.664' W	16.06.2017	
BE-B7	58° 13.929' N	002° 58.456' W	18.07.2017	
BE-C4	58° 12.307' N	002° 57.948' W	23.05.2017	13.12.2017
BE-C5	58° 12.902' N	002° 57.749' W	11.07.2017	09.02.2018
BE-C6	58° 13.524' N	002° 57.541' W	10.07.2017	08.02.2018
BE-C7	58° 14.144' N	002° 57.332' W	15.06.2017	01.09.2017
BE-C8	58° 14.766' N	002° 57.124' W	17.07.2017	20.01.2018
BE-C9	58° 15.386' N	002° 56.915' W	28.08.2017	
BE-D3	58° 11.995' N	002° 57.002' W	21.05.2017	12.12.2017

# Weekly Notice of Operations (WNoO)

## Beatrice Offshore Windfarm Limited Construction Operations



Issue Date: 12th February 2018

LF000005-WNO-013: Weekly Notice of Operations - Rev 41

Location ID	Latitude WGS84	Longitude WGS84	Piling Complete	Jacket installed
BE-D4	58° 12.497' N	002° 56.834' W	22.06.2017	14.12.2017
BE-D5	58° 13.117' N	002° 56.626' W	26.05.2017	21.01.2018
BE-D6	58° 13.739' N	002° 56.417' W	13.06.2017	31.08.2017
BE-D7	58° 14.359' N	002° 56.209' W	31.05.2017	18.01.2018
BE-D8	58° 14.981' N	002° 55.999' W	02.06.2017	20.12.2017
BE-D9	58° 15.602' N	002° 55.790' W	16.07.2017	21.09.2017
BE-D10	58° 16.223' N	002° 55.582' W	31.08.2017	
BE-D11	58° 16.844' N	002° 55.373' W	13.08.2017	
BE-E1	58° 10.900' N	002° 56.256' W	10.04.2017	01.09.2017
BE-E2	58° 11.470' N	002° 56.128' W	14.04.2017	16.08.2017
BE-E3	58° 12.090' N	002° 55.920' W	19.04.2017	02.12.2017
BE-E4	58° 12.712' N	002° 55.710' W	02.07.2017	20.09.2017
BE-E5	58° 13.333' N	002° 55.502' W	19.05.2017	03.02.2018
BE-E6	58° 13.954' N	002° 55.293' W	18.05.2017	24.08.2017
BE-E7	58° 14.575' N	002° 55.084' W	01.06.2017	25.08.2017
BE-E8	58° 15.196' N	002° 54.875' W	30.05.2017	18.12.2017
BE-E9	58° 15.817' N	002° 54.665' W	15.07.2017	21.09.2017
BE-E10	58° 16.438' N	002° 54.456' W	01.09.2017	
BE-E11	58° 17.059' N	002° 54.247' W	19.09.2017	
BE-E12	58° 17.680' N	002° 54.037' W	14.08.2017	
BE-F2	58° 11.685' N	002° 55.005' W	03.07.2017	06.09.2017
BE-F3	58° 12.306' N	002° 54.796' W	17.04.2017	07.09.2017
BE-F4	58° 12.927' N	002° 54.588' W	04.07.2017	19.09.2017
BE-F5	58° 13.548' N	002° 54.378' W	17.05.2017	14.09.2017
BE-F6	58° 14.168' N	002° 54.169' W	11.05.2017	11.09.2017
BE-F8 (OTM2)	58° 15.411' N	002° 53.750' W	08.04.2017	
BE-F9	58° 16.031' N	002° 53.540' W	22.09.2017	
BE-F10	58° 16.653' N	002° 53.330' W	20.09.2017	
BE-F11	58° 17.274' N	002° 53.120' W	07.09.2017	
BE-F12	58° 17.894' N	002° 52.911' W	05.07.2017	
BE-F13	58° 18.516' N	002° 52.701' W	10.09.2017	
BE-G3	58° 12.544' N	002° 53.726' W	28.05.2017	15.08.2017
BE-G4	58° 13.142' N	002° 53.464' W	17.06.2017	08.09.2017
BE-G5	58° 13.762' N	002° 53.254' W	10.05.2017	09.09.2017
BE-G6	58° 14.384' N	002° 53.044' W	06.05.2017	20.08.2017
BE-G7 (OTM1)	58° 15.004' N	002° 52.834' W	03.04.2017	06.02.2018
BE-G8	58° 15.625' N	002° 52.625' W	07.07.2017	10.09.2017
BE-G9	58° 16.247' N	002° 52.415' W	04.11.2017	
BE-G10	58° 16.867' N	002° 52.204' W	21.09.2017	
BE-G11	58° 17.488' N	002° 51.994' W	20.08.2017	
BE-G12	58° 18.109' N	002° 51.784' W	18.08.2017	
BE-G13	58° 18.730' N	002° 51.574' W	13.09.2017	
BE-G14	58° 19.351' N	002° 51.362' W	14.09.2017	
BE-H4	58° 13.356' N	002° 52.339' W	19.06.2017	13.08.2017
BE-H5	58° 13.977' N	002° 52.130' W	20.06.2017	27.08.2017



# Weekly Notice of Operations (WNoO)

## Beatrice Offshore Windfarm Limited Construction Operations



Issue Date: 12th February 2018

LF000005-WNO-013: Weekly Notice of Operations - Rev 41

Location ID	Latitude WGS84	Longitude WGS84	Piling Complete	Jacket installed
BE-H6	58° 14.598' N	002° 51.920' W	20.04.2017	21.08.2017
BE-H7	58° 15.219' N	002° 51.709' W	08.07.2017	
BE-H8	58° 15.840' N	002° 51.499' W	06.05.2017	13.09.2017
BE-H9	58° 16.461' N	002° 51.289' W	15.11.2017	
BE-H10	58° 17.082' N	002° 51.079' W	27.10.2017	
BE-H11	58° 17.703' N	002° 50.867' W	10.10.2017	
BE-H12	58° 18.324' N	002° 50.657' W	09.09.2017	
BE-H13	58° 18.944' N	002° 50.446' W	07.10.2017	
BE-J5	58° 14.192' N	002° 51.005' W	04.05.2017	26.08.2017
BE-J6	58° 14.812' N	002° 50.795' W	21.06.2017	
BE-J7	58° 15.433' N	002° 50.585' W	06.08.2017	
BE-J8	58° 16.055' N	002° 50.373' W	12.06.2017	22.12.2017
BE-J9	58° 16.675' N	002° 50.163' W	04.08.2017	
BE-J10	58° 17.296' N	002° 49.952' W	03.12.2017	
BE-J11	58° 17.917' N	002° 49.741' W	26.08.2017	
BE-J12	58° 18.538' N	002° 49.530' W	27.08.2017	
BE-J13	58° 19.159' N	002° 49.319' W	08.10.2017	
BE-K6	58° 15.027' N	002° 49.669' W	07.08.2017	24.12.2017
BE-K7	58° 15.648' N	002° 49.459' W	08.08.2017	30.12.2017
BE-K8	58° 16.269' N	002° 49.247' W	31.07.2017	
BE-K9	58° 16.890' N	002° 49.036' W	05.08.2017	
BE-K10	58° 17.510' N	002° 48.825' W	21.08.2017	
BE-K11	58° 18.131' N	002° 48.614' W	25.08.2017	
BE-K12	58° 18.752' N	002° 48.403' W	09.10.2017	
BE-L7	58° 15.862' N	002° 48.333' W	09.08.2017	01.01.2018
BE-L8	58° 16.482' N	002° 48.122' W	25.07.2017	
BE-L9	58° 17.104' N	002° 47.910' W	31.07.2017	
BE-L10	58° 17.724' N	002° 47.698' W	30.07.2017	
BE-M9	58° 17.317' N	002° 46.784' W	27.07.2017	
BE-M10	58° 17.938' N	002° 46.571' W	28.07.2017	

# Weekly Notice of Operations (WNoO)

## Beatrice Offshore Windfarm Limited

### Construction Operations

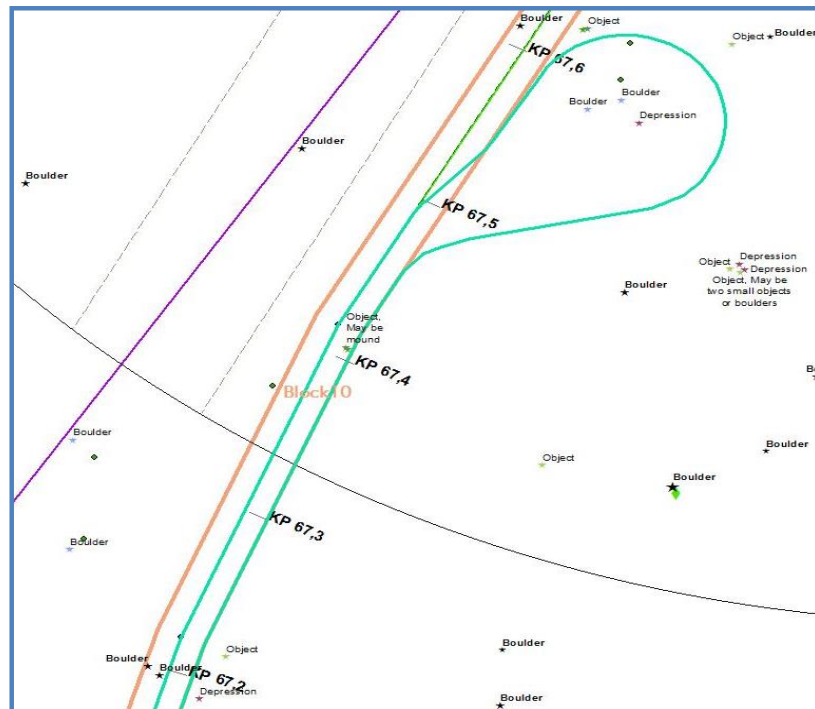
Issue Date: 12th February 2018

LF000005-WNO-013: Weekly Notice of Operations - Rev 41

## 2.2 Installation of Export Cable EC1.

### Activity Description

CLV Nexans Skagerrak has completed trenching the second section of the export cable to the wet store loop at KP 67.7



**Fig. 3 Cable wet store location within the array area**

Approximate location of cable wet store loop EC1.2	Latitude WGS84	Longitude WGS84
KP 67.7 on EC1	58° 14.806'N	002°53.028'W

## 2.3 Installation of Export Cable EC2.2

The installation of two export cables (EC) in the Beatrice Offshore Windfarm construction site will continue with installation of section EC2.2 from South of planned OTM2 and approx.37 km Southwards. In this respect the work listed here is due to be carried out as described below starting around 30<sup>th</sup> January 2018.

# Weekly Notice of Operations (WNoO)

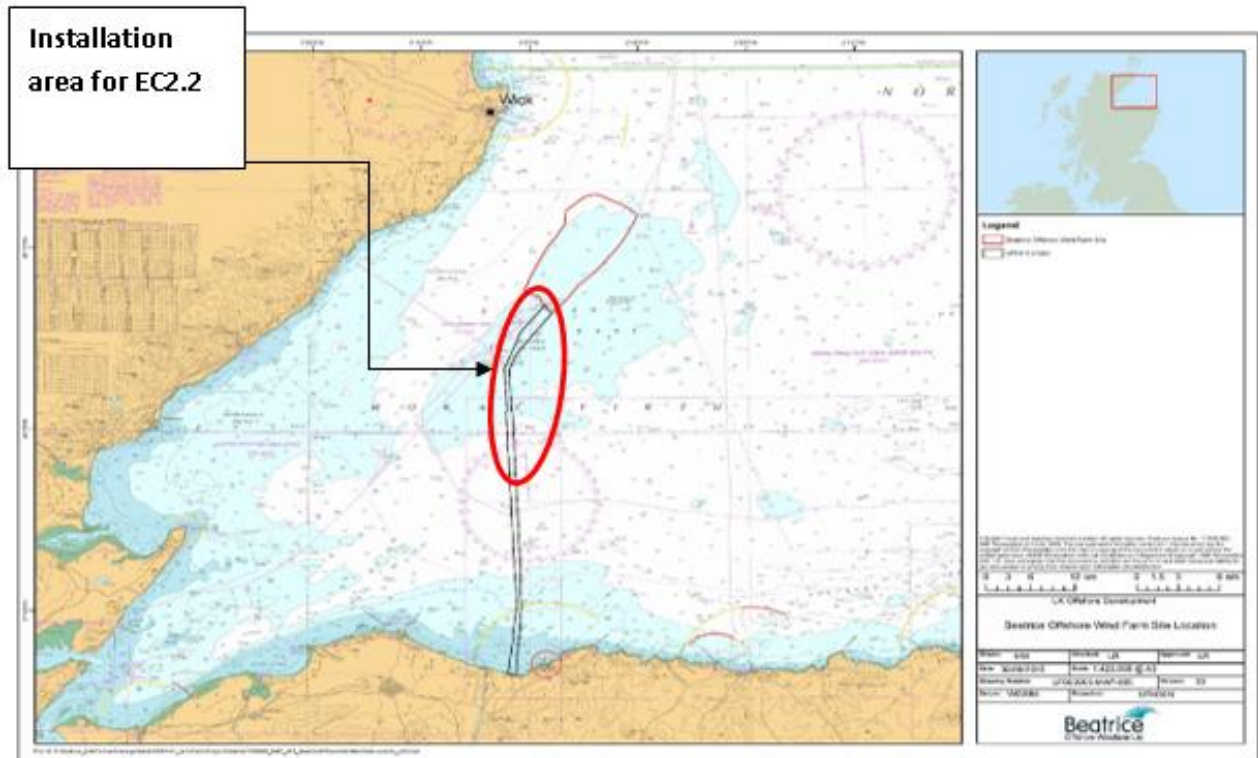
## Beatrice Offshore Windfarm Limited

### Construction Operations

Issue Date: 12th February 2018

LF000005-WNO-013: Weekly Notice of Operations - Rev 41

#### 2.3.1 Area of Planned Activity



**Fig.4** Cable installation location, approximately 33km – 67km from the Portgordon Beach

Approximate location of cable laydown ends EC2.2	Latitude WGS84	Longitude WGS84
KP 68 on EC2	58° 14.9062' N	2° 54.8284' W
KP 33 on EC2	57° 57.5978' N	3° 2.6611' W

#### 2.3.2 Activity Description

On behalf of BOWL, Nexans Norway AS, the cable laying vessel Nexans Skagerrak will install section EC2.2 of the export cable.

The cable has been temporary laid South of the planned OTM2 location. It will later be pulled in through the OTM2 J-tube.

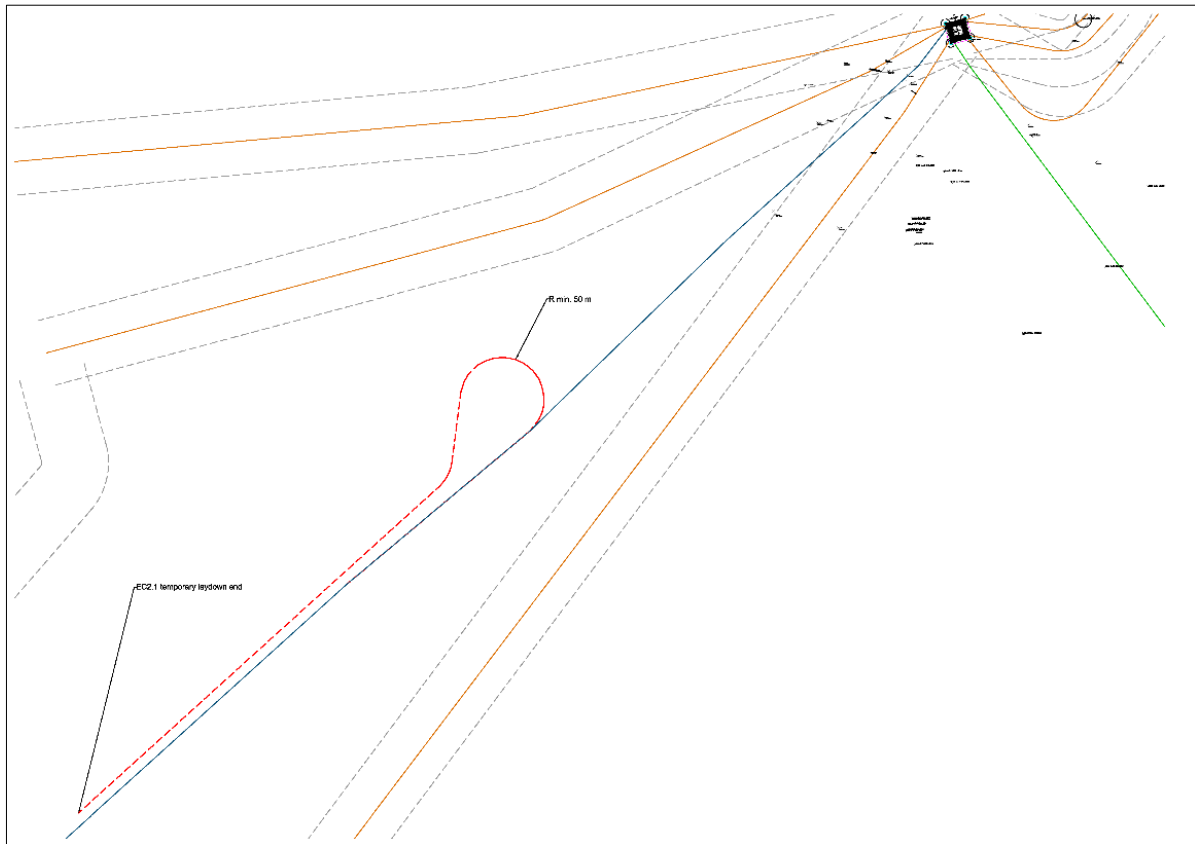
The cable end has been deployed South of the planned OTM2, and the cable laid Northwards in a loop and then South following the planned cable route from KP68 to KP33

# Weekly Notice of Operations (WNoO)

## Beatrice Offshore Windfarm Limited Construction Operations

Issue Date: 12th February 2018

LF000005-WNO-013: Weekly Notice of Operations - Rev 41



**Fig.5** EC2.2 laying south of OTM2, showing location of cable loop.

The second cable end is laid down on seabed approx. 37 km south of the OTM2

### 2.3.3 Vessels Associated with the Activity

The vessels that are involved with the described operation are the CLV Nexans Skagerrak and guard vessels Artemis and Morning Dawn, who will guard the exposed cable until it has been buried.

Nexans Skagerrak	
<b>General Description and Dimensions:</b>	Cable Layer & Trenching L:99.75m / B:35.41m
<b>Call Sign:</b>	LCEK
<b>MMSI:</b>	257253000
<b>Onshore Representative:</b>	Øyvind Haug BEATRICE Installation Engineering Manager Mob: +47 916 27 674 Office: +47 22 88 65 09



# Weekly Notice of Operations (WNoO)

## Beatrice Offshore Windfarm Limited Construction Operations

Issue Date: 12th February 2018

LF000005-WNO-013: Weekly Notice of Operations - Rev 41



### 2.3.4 Adverse Weather Conditions

Should adverse weather occur during the trenching, the Skagerrak will cease operation and hold position until suitable working weather returns. The vessel is able to recover the Capjet within around 30 minutes and move off station if required.

The operational limits for the trenching are listed in below table:

	Laying
Max Wind Force	15 m/s <sup>1)</sup>
Max Wave Height, Hs	3 m <sup>2)</sup>
Max Surface Current	1.3 m/s
Max Bottom Current	1.3 m/s
Min Surface Visibility	100 m
Min ROV Visibility	2 m

# Weekly Notice of Operations (WNoO)

## Beatrice Offshore Windfarm Limited

### Construction Operations

Issue Date: 12th February 2018

LF000005-WNO-013: Weekly Notice of Operations - Rev 41

#### 2.4 Export cable 2 – Near Shore Diving Works.

On behalf of Nexans Norway AS, Agder Dykk AS will install a plastic pull in pipe to the already installed intake of the Export cable landfall pipe on Export Cable 2. Similar work was completed in Sept 2017 for Export Cable 1. A surface diving operation will be conducted to install the pull in pipe over a distance of roughly 30m from the Export cable breakout location. BOWL Notice to Mariners 037 refers to these works. The works are programmed to take place between the 12<sup>th</sup> – 19<sup>th</sup> of February 2018.

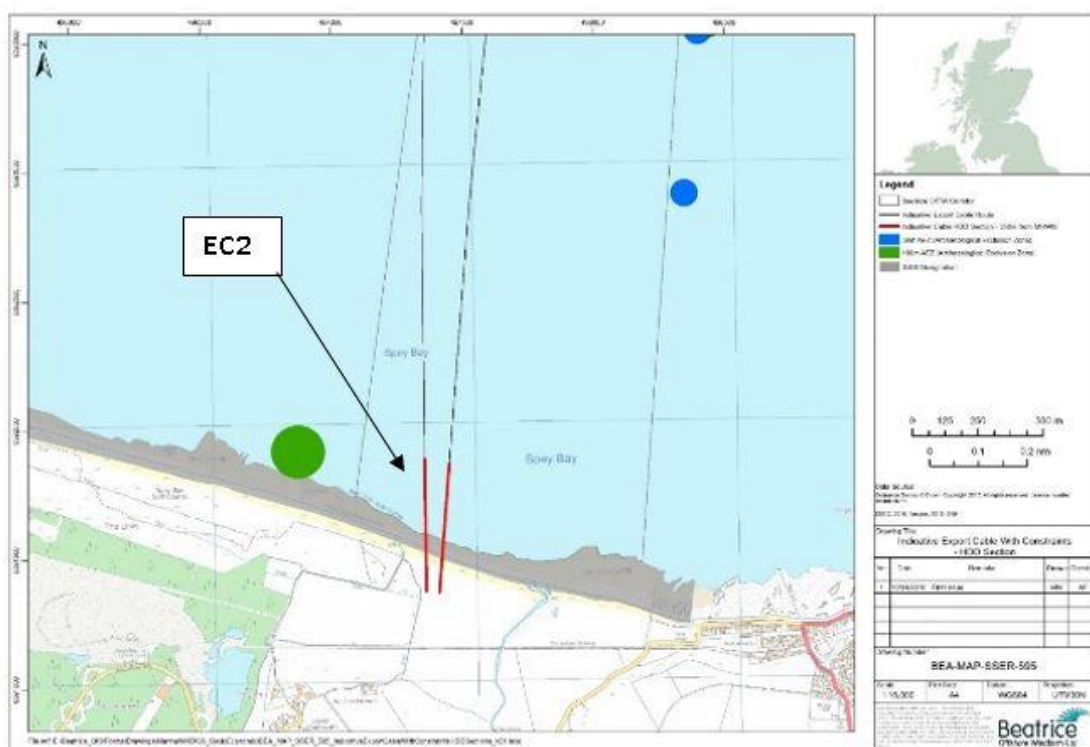


Fig 7 Location of Near Shore Diving Works.

Exit pipe marker buoy Location	Latitude WGS84	Longitude WGS84
EC2 pipe exit	57°40.143'N	003° 02.655'W

The dive support vessel Aramis will be positioned over the required location using a 4-point anchor system. Using a manually positioned dredging system, the divers will first clear the pipe trench over the 30m distance to a depth of 2m, moving the DSV on the anchors as required.

# Weekly Notice of Operations (WNoO)

## Beatrice Offshore Windfarm Limited Construction Operations

Issue Date: 12th February 2018

LF000005-WNO-013: Weekly Notice of Operations - Rev 41

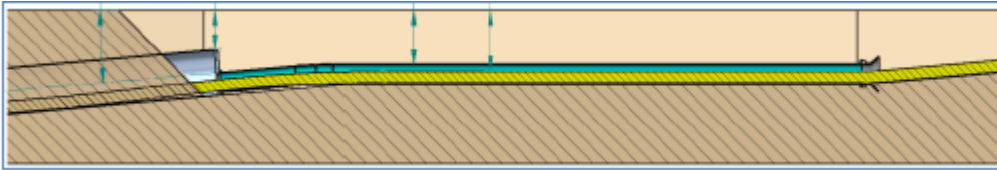


Fig 8 PE pipe with power cable installed on seabed

### 2.4.1 Vessels Associated with the Activity

DSV Aramis	
General Description and Dimensions:	Aluminium Workboat; 15.7m, 4.95m 0.80m
Call Sign:	LDEH
MMSI:	257167000
Onshore Representative:	Øyvind Haug BEATRICE Installation Engineering Manager Mob: +47 916 27 674 Office: +47 22 88 65 09

A photograph of a red and white workboat named 'AGDER DYKK AS' on a paved surface. The boat has a white cabin and a red hull. A yellow crane is visible on the deck. The background shows a body of water and trees.

Dvergen	
General Description and Dimensions:	Tender vessel; 5.32m, 2.07m 1.82m
Call Sign:	N/A
MMSI:	N/A
Onshore Representative:	Øyvind Haug BEATRICE Installation Engineering Manager Mob: +47 916 27 674 Office: +47 22 88 65 09

# Weekly Notice of Operations (WNoO)

## Beatrice Offshore Windfarm Limited

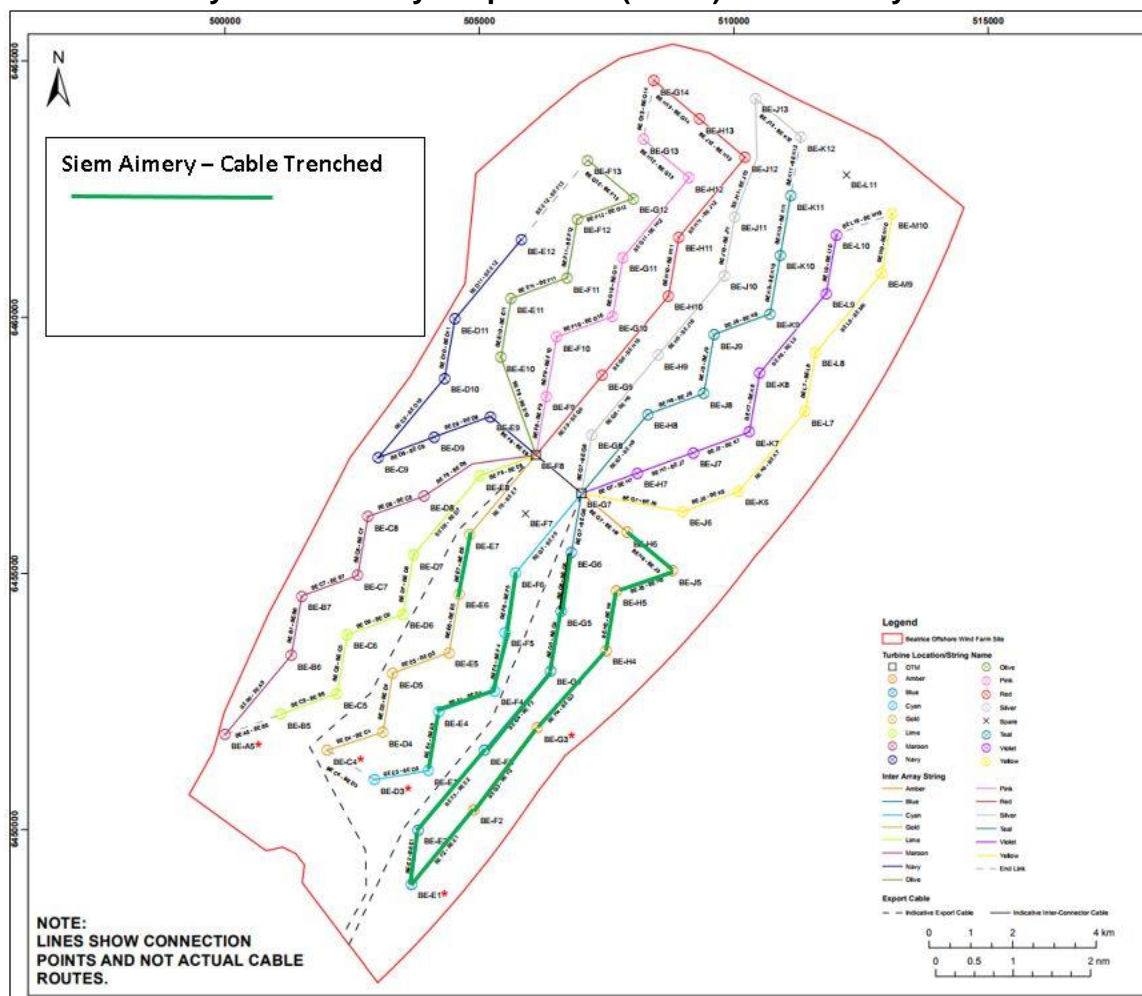
### Construction Operations

Issue Date: 12th February 2018

LF000005-WNO-013: Weekly Notice of Operations - Rev 41



## 2.5 Inter Array Cable Pre Lay Grapnel Run (PLGR) & Inter Array Cable Installation.



**Fig. 9 Cable installation Progress**



# Weekly Notice of Operations (WNoO)

## Beatrice Offshore Windfarm Limited

### Construction Operations



Issue Date: 12th February 2018

LF000005-WNO-013: Weekly Notice of Operations - Rev 41

Siem Stingray and Siem Aimery have completed works as shown in Table 2. The inter array cable vessels will return approximately 10th March 2018

It should be noted at this stage that not all cables have been trenched to the required depth and as such are potentially at risk from any fishing or anchoring activities.

## 2.6 Scientific Equipment Removal & Service and Re-installation

Mariners are advised that further to notice UoA/09/2017, and in conjunction with Beatrice Offshore Windfarm Limited (BOWL), the University of Aberdeen intends to **remove** scientific equipment moorings in the Moray Firth at the locations listed in Table 1 below (see chart extracts at the foot of this notice)

Name	As laid coordinates (WGS84 datum)		Characteristics
40	57° 48.988' N	3° 36.379' W	Subsurface with acoustic release.
41	57° 51.141' N	3° 33.018' W	Subsurface with acoustic release.
47	58° 00.817' N	3° 08.549' W	Subsurface.
48	58° 04.009' N	3° 06.916' W	Subsurface.
49	58° 04.450' N	3° 00.999' W	Subsurface.
54	58° 13.520' N	2° 41.961' W	Subsurface.
56	58° 18.724' N	2° 37.062' W	Subsurface.
64	57° 42.521' N	3° 30.174' W	Surface marked (dhan, 12' aluminium & RADAR reflector)
66	57° 43.082' N	3° 14.977' W	Surface marked (dhan, 12' aluminium & RADAR reflector)
67	57° 42.069' N	3° 10.026' W	Surface marked (dhan, 12' aluminium & RADAR reflector)
108	58° 18.993' N	2° 59.223' W	Subsurface.
110	58° 07.668' N	2° 45.374' W	Subsurface.
159	58° 09.260' N	2° 52.234' W	Subsurface.
165	58° 12.478' N	3° 01.251' W	Subsurface.
183	58° 20.235' N	2° 50.708' W	Subsurface.
185	58° 11.356' N	2° 59.450' W	Subsurface with transponder.

Mariners are advised that the below scientific equipment moorings were **removed** on the 3<sup>rd</sup> of February 2018.

Name	As laid coordinates (WGS84 datum)		Characteristics
146	58° 15.224' N	2° 53.322' W	Subsurface with transponder.
149	58° 16.151' N	2° 51.899' W	Subsurface with transponder.
150	58° 16.755' N	2° 50.970' W	Subsurface with transponder.
164	58° 12.830' N	2° 51.669' W	Subsurface with transponder.



# Weekly Notice of Operations (WNoO)

## Beatrice Offshore Windfarm Limited Construction Operations



Issue Date: 12th February 2018

LF000005-WNO-013: Weekly Notice of Operations - Rev 41

178	58° 17.987' N	2° 49.250' W	Subsurface.
182	58° 15.000' N	2° 55.733' W	Subsurface with transponder.
197	58° 12.063' N	2° 57.544' W	Subsurface with transponder.
201	58° 19.109' N	2° 51.632' W	Subsurface
202	58° 19.136' N	2° 51.652' W	Subsurface
203	58° 19.163' N	2° 51.677' W	Subsurface
204	58° 19.184' N	2° 51.691' W	Subsurface

Mariners are advised that the below scientific equipment mooring was **removed** on the 4th of February 2018.

Name	As laid coordinates (WGS84 datum)		Characteristics
163	58° 17.966' N	2° 44.992' W	Subsurface.
175	58° 18.725' N	2° 46.841' W	Subsurface.
179	58° 17.981' N	2° 50.020' W	Subsurface.
180	58° 18.482' N	2° 52.002' W	Subsurface with transponder.
181	58° 19.065' N	2° 51.260' W	Subsurface with transponder.
184	58° 15.422' N	2° 47.713' W	Subsurface.
191	58° 16.536' N	2° 46.446' W	Subsurface.
196	58° 14.097' N	2° 54.656' W	Subsurface with transponder.

Mariners should also note that the following existing moorings (table 2) in the Moray Firth will be **served and reinstalled in their current locations** (see also chart extracts at the foot of this notice).

Name	As laid coordinates (WGS84 datum)		Characteristics
1	57° 41.413' N	3° 58.953' W	Subsurface
2	57° 35.133' N	4° 05.891' W	Surface marked (NB50 buoy, red)
3	57° 44.073' N	3° 19.776' W	Surface marked (dhan, 12' aluminium & RADAR reflector)
4	57° 41.357' N	3° 05.547' W	Surface marked (NB50 buoy, red)
17	57° 57.759' N	3° 31.260' W	Subsurface with acoustic release.
42	57° 52.337' N	3° 29.058' W	Subsurface with acoustic release.
45	57° 57.261' N	3° 16.084' W	Subsurface with acoustic release.
89	57° 56.056' N	3° 38.252' W	Subsurface with acoustic release.
160	58° 17.648' N	2° 49.931' W	Subsurface with transponder.
161	58° 12.933' N	2° 55.954' W	Subsurface with transponder.
162	58° 18.176' N	2° 54.124' W	Subsurface with transponder.

# Weekly Notice of Operations (WNoO)


## Beatrice Offshore Windfarm Limited Construction Operations



Issue Date: 12th February 2018

LF000005-WNO-013: Weekly Notice of Operations - Rev 41

The moorings support sound recording equipment and acoustic loggers that record echolocation clicks of dolphins and porpoises (see images at the foot of this notice)  
All works will be carried out by Moray First Marine Ltd, using the Coral Wind or the Waterfall.

Coral Wind	
<b>General Description and Dimensions:</b>	Workboat, UK MCA Cat.2, 60nm from safe haven LOA 14m, Beam 5.1m, Draft 1.2m
<b>Call sign:</b>	2EMX8
<b>MMSI:</b>	235086491
<b>On Board Contact:</b>	Bill Ruck, 07775 802963
<b>E-mail:</b>	bill@moraymarine.com
	

Waterfall	
<b>General Description and Dimensions:</b>	Workboat, UK MCA Cat.2, 60nm from safe haven LOA 15m, Beam 6m.
<b>Call sign:</b>	2CBT4
<b>MMSI:</b>	235071392
<b>On Board Contact:</b>	Bill Ruck, 07775 802963
<b>E-mail:</b>	bill@moraymarine.com
	

# Weekly Notice of Operations (WNoO)

## Beatrice Offshore Windfarm Limited

### Construction Operations

Issue Date: 12th February 2018

LF000005-WNO-013: Weekly Notice of Operations - Rev 41

A further Notice to Mariners will be issued when the moorings are permanently discontinued.

For information and enquiries please contact:

Tim Candido Barton,

Lighthouse Field Station, University of Aberdeen, George St., Cromarty, Ross-shire, IV11 8YL.

+44 (0)1381 600548.

[t.r.barton@abdn.ac.uk](mailto:t.r.barton@abdn.ac.uk)



Fig. 10 Examples of equipment which the above moorings support

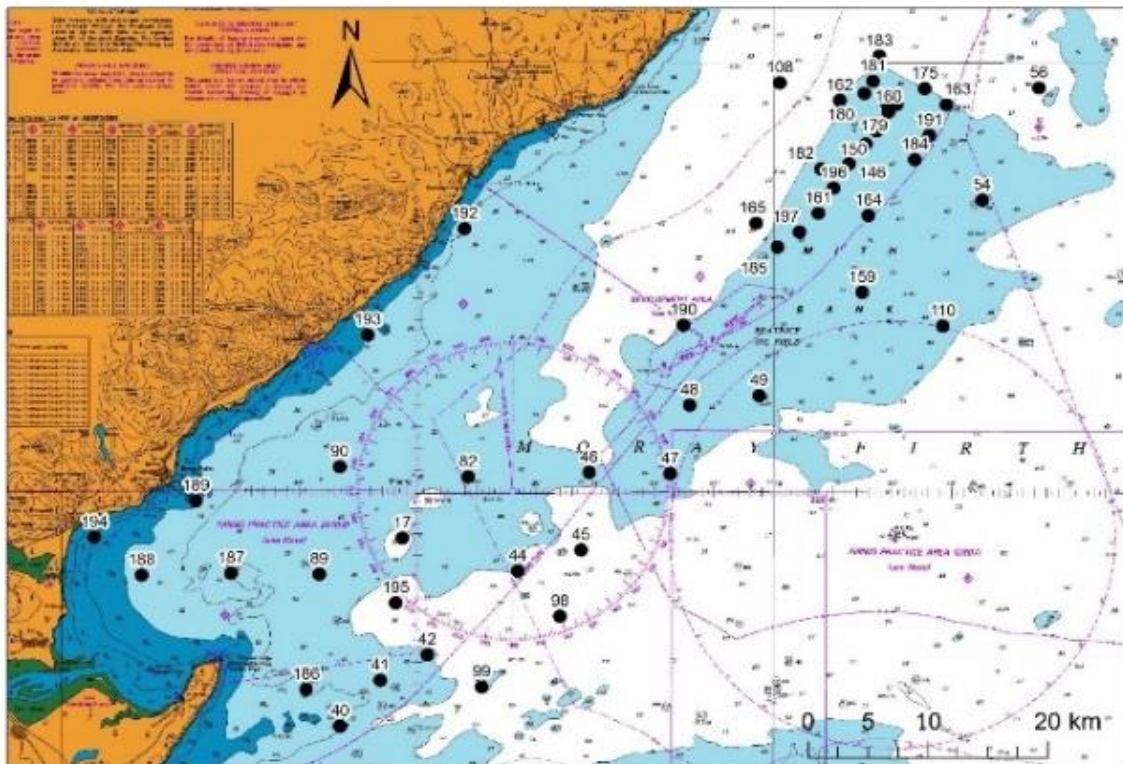


Fig. 11 Mooring locations Moray Firth, excluding sites along the southern shore



# Weekly Notice of Operations (WNoO)

## Beatrice Offshore Windfarm Limited Construction Operations

Issue Date: 12th February 2018

LF000005-WNO-013: Weekly Notice of Operations - Rev 41

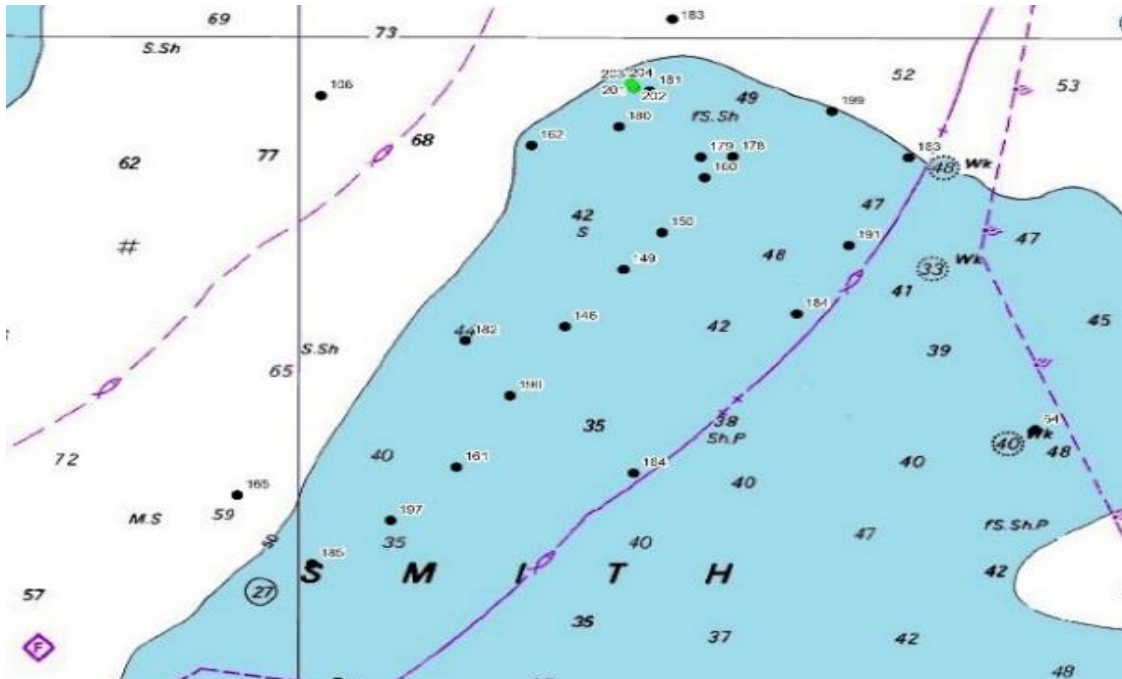


Fig. 12 - Mooring locations; Detail of Smith Bank sites, showing new locations in green

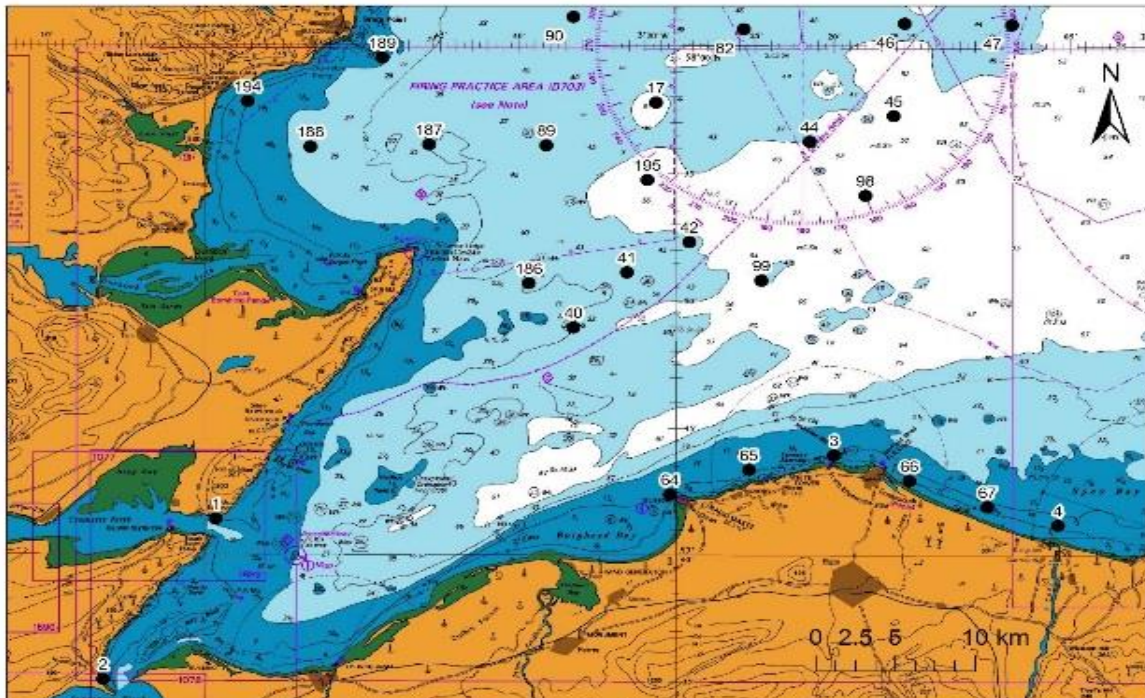


Fig. 13 - Mooring locations; Detail of South side of Moray Firth sites

# Weekly Notice of Operations (WNoO)

## Beatrice Offshore Windfarm Limited

### Construction Operations

---



Issue Date: 12th February 2018

LF000005-WNO-013: Weekly Notice of Operations - Rev 41

### 3. Completed Operations

#### 3.1 Piling operations

The placement of four pin piles at both OTM locations and 84 WTG foundation locations was successfully completed on the 3<sup>rd</sup> of December 2017.

### 4. General Safety Advice

All vessels engaged in the activity will exhibit appropriate lights and shapes prescribed by the International Regulations for Preventing Collisions at Sea; relative to their operations. All vessels engaged in the activity will also transmit an Automatic Identification System (AIS) message.

The Secretary of State has authorised the use of the following safety zones as per Notice to Mariners LF000005-NTM-004.

1. 500 metres radius around each wind turbine, offshore transformer module and / or their substructures and foundations comprising the Beatrice Offshore Wind Farm whilst work is being performed as indicated by the presence of construction vessels.
2. 50 metres radius around each wind turbine, offshore transformer module and / or their substructure and foundations installed but waiting to be commissioned as part of the Beatrice Offshore Wind Farm.

ALL VESSELS ARE REQUESTED to give all construction and support vessels a wide berth.

MARINERS ARE REMINDED to navigate with caution and keep continued watch on VHF Ch. 70 / 16 when navigating the area.

### 5. Guard Vessel Deployment

Guard vessels currently on the main construction site are Seagull and Fladda Maid. The Moremma will relieve the Seagull at midnight 12 February. All vessels can be contacted on VHF Ch.16. Guard vessels Artemis and Morning Dawn are guarding the exposed export cable on behalf of Nexans AS.

<b>Project:</b>	Beatrice Offshore Windfarm Guard Vessel Deployment.
<b>Contractor:</b>	SHL & Nexans – SFF Services Ltd.
<b>Contract Purpose:</b>	Guard Vessel for the Windfarm site.
<b>Area:</b>	BOWL construction site: within the array cable routes and foundation locations. (See Fig 1 for details)
<b>Deployment Dates:</b>	1 <sup>st</sup> April 2017 – TBC.
<b>Deployment Vessel (s):</b>	Various on a continuous 21 day rotation.
<b>Equipment:</b>	N/A



# Weekly Notice of Operations (WNoO)

## Beatrice Offshore Windfarm Limited

### Construction Operations

---



Issue Date: 12th February 2018

LF000005-WNO-013: Weekly Notice of Operations - Rev 41

On behalf of BOWL, Seaway Heavy Lifting has contracted the Scottish Fishermen's Federation (SFF) to provide guard vessels during the piling and foundation installation campaigns. Nexans Norway AS have contracted the SFF to provide guard vessels during the export cable installation campaign. These vessels will change regularly.

The guard vessel's primary duty is security of the construction site by informing and warning non-construction vessels of the ongoing activities and associated Safety Zones.

#### 6. Fisheries Liaison

Fisheries liaison associated with the activity will be co-ordinated by Brown and May Marine. For any commercial fishery queries please contact: Alex Winrow-Giffin, telephone: +44 (0)1379 872144 and mobile: +44 (0)7760 160039. [alex@brownmay.com](mailto:alex@brownmay.com)

#### 7. Distribution List

The distribution of this notice is as per email recipient's header. A central list of recipients is maintained by the Marine Coordinator. If you are not the appropriate recipient of these notices, or do not wish to receive the notices in the future, please contact us at the address included in Section 1 of this notice.

#### 8. Website

The official website of Beatrice Offshore Windfarm Limited can be found at:

<https://www.beatricewind.com>

This contains all Notices to Mariners (NtM) published by BOWL and all Weekly Notices of Operations, together with a large amount of general information about the Project.

There is also a Twitter feed at <https://twitter.com/beatricewind>.

# Weekly Notice of Operations (WNoO)









## Beatrice Offshore Windfarm Limited

### Construction Operations



Issue Date: 12th February 2018

LF000005-WNO-013: Weekly Notice of Operations - Rev 41

Beatrice Offshore Windfarm Vessels & Operators									
Reference to Marine Licence Conditions 2.5, 2.6 and 3.1.2									
Vessel Data Matrix OWF									
No Ref	Vessel Picture	Vessel Name / Flag	Type / Function	Operator	Contact / contact details	Call sign / MMSI / IMO	LOA (m) Beam (m) Draft (m)	Date on Site	Marine Licence applicable
1		Stanislav Yudin	Heavy Lift Vessel	Seaway Heavy Lifting (SHL)	Danny Sprangers (SHL) C/o Subsea 7 East Campus Arnhall Business Park Westhill, Aberdeenshire AB32 6FE +31 653997158 EMAIL: dsprangers@shl.nl	5BYM2 / 210334000 IMO8219463	183.3 x 40 x 8.9m	00.01.2018	OWF & OWTW
2		Oleg Strashnov	Heavy Lift Vessel / HLV	Seaway Heavy Lifting (SHL)	C/o Subsea 7 East Campus Prospect Road Arnhall Business Park Westhill, Aberdeenshire AB32 6FE +31 653997158 EMAIL: dsprangers@shl.nl	5BNL2 / 212905000	183.3 / 47 / 13.5	15.01.2018	OWF & OWTW
3		Smit Sentosa	Anchor Handling Tug	Seaway Heavy Lifting (SHL)	Danny Sprangers (SHL) C/o Subsea 7 East Campus Arnhall Business Park Westhill, Aberdeenshire AB32 6FE +31 653997158 EMAIL: dsprangers@shl.nl	ORRX / 205696000 IMO9662356	51.8 x 15.0 x 6.2m	01.01.2018	OWF & OWTW
4		Smit Seraya	Barge Tow Vessel	Seaway Heavy Lifting (SHL)	Danny Sprangers (SHL) C/o Subsea 7 East Campus Arnhall Business Park Westhill, Aberdeenshire AB32 6FE +31 653997158 EMAIL: dsprangers@shl.nl	9V9845 / 566804000 IMO9662368	51.8 x 16 x 6m	01.01.2018	OWF
5		Vos Prelude	Supply Vessel	Seaway Heavy Lifting (SHL)	Danny Sprangers (SHL) C/o Subsea 7 East Campus Arnhall Business Park Westhill, Aberdeenshire AB32 6FE +31 653997158 EMAIL: dsprangers@shl.nl	PBZK / 245969000 IMO9444340	73 x 20m	16.11.2017	OWF & OWTW
6		Island Crown	Walk to work OTM commissioning	Stålhaugen 12, 6065 Ulsteinvik, Norway +47 70400000	Project Manager Arnt Petter Osnes T +47 70400025 +47 46829930 arnt@islandoffshore.com	LAC08/9630535 IMO257245000	96 x 20 m	01.02.2017	OWF
7		Skagerrak	Export Cable laying Vessel	Nexans Norway AS Innspruten 9, 0663 Oslo, Norway +47 22 88 61 00	Øyvind Haug BEATRICE Installation Engineering Manager Mob: +47 916 27 674 Office: +47 22 88 65 09	LCEK / 25723000	99.75m x 35.41m	09.11.2017	OWF / OWTW
8		Britoil 120	Barge Tow Vessel	Seaway Heavy Lifting (SHL)	Danny Sprangers (SHL) C/o Subsea 7 East Campus Arnhall Business Park Westhill, Aberdeenshire AB32 6FE +31 653997158 EMAIL: dsprangers@shl.nl	9V7116 / 564104000	59m x 16m	05.02.2018	OWF

# Weekly Notice of Operations (WNoO)

## Beatrice Offshore Windfarm Limited

### Construction Operations



Issue Date: 12th February 2018

LF000005-WNO-013: Weekly Notice of Operations - Rev 41

9		Rix Lynx	Crew Transfer Vessel / CTV	Seaway Heavy Lifting (SHL)	Danny Sprangers (SHL) C/O Subsea 7 East Campus Arnhall Business Park Westhill, Aberdeenshire AB32 6FE +31 653997158 EMAIL: dsprangers@shl.nl	2JGQ6 / 235115745 IMO9802358	26 x 7.0 x 2.0m	27.03.2017	OWF
10		Centaurus	Barge Tow Vessel	Seaway Heavy Lifting (SHL)	Danny Sprangers (SHL) C/O Subsea 7 East Campus Arnhall Business Park Westhill, Aberdeenshire, AB32 6FE +31 653997158 Email - dsprangers@shl.nl	V2ED3 / 305820000 IMO9433755	48.81 x 14.06m	08.08.2017	OWF
11		Pegasus	Barge Tow Vessel	Seaway Heavy Lifting (SHL)	Danny Sprangers (SHL) C/O Subsea 7 East Campus Arnhall Business Park Westhill, Aberdeenshire, AB32 6FE +31 653997158 Email - dsprangers@shl.nl	V2ED2 / 305389000 IMO9433743	48.81 x 14.06m	08.08.2017	OWF
12		Kamarina	Barge Tow Vessel	Seaway Heavy Lifting (SHL)	Danny Sprangers (SHL) C/O Subsea 7 East Campus Arnhall Business Park Westhill, Aberdeenshire, AB32 6FE +31 653997158 Email - dsprangers@shl.nl	IITW2 / 247278400 IMO9499644	50 x 15m	08.08.2017	OWF
13		Union Sovereign	Anchor Handling Tug	Seaway Heavy Lifting (SHL)	Danny Sprangers (SHL) C/O Subsea 7 East Campus Arnhall Business Park Westhill, Aberdeenshire, AB32 6FE +31 653997158 Email - dsprangers@shl.nl	ORQW / 205644000 IMO9262742	67.4 x 15.5m	21.08.2017	OWF / OTW
14		Artemis INS564	Guard Vessel	Scottish Fishermens Federation (SFF) for Nexans AS	Øyvind Haug BEATRICE Installation Engineering Manager Mob: +47 916 27 674 Office: +47 22 88 65 09	MVIX5 / 233975000	28 x 8m	12.12.2017	OWF & OTW
15		Morning Dawn PD359	Guard Vessel	Scottish Fishermens Federation (SFF) for Nexans AS	Øyvind Haug BEATRICE Installation Engineering Manager Mob: +47 916 27 674 Office: +47 22 88 65 09	MHEU3 / 232253000	45 x 9 m	21.11.2017	OWF & OTW
16		Fladda Maid UL209	Guard Vessel	Scottish Fishermens Federation (SFF) for Seaway Heavy Lifting (SHL)	Danny Sprangers (SHL) C/O Subsea 7 East Campus Arnhall Business Park Westhill, Aberdeenshire, AB32 6FE +31 653997158 Email - dsprangers@shl.nl	MHXK6/ 233826000	20 x 7m	06.02.2018	OWF
17		Moremma PD135	Guard Vessel	Scottish Fishermens Federation (SFF) for Seaway Heavy Lifting (SHL)	Danny Sprangers (SHL) C/O Subsea 7 East Campus Arnhall Business Park Westhill, Aberdeenshire, AB32 6FE +31 653997158 Email - dsprangers@shl.nl	MKHC6/ 235007170	20 x 7m	12.02.2018	OWF
18		Seagull BF74	Guard Vessel	Scottish Fishermens Federation (SFF) for Seaway Heavy Lifting (SHL)	Danny Sprangers (SHL) C/O Subsea 7 East Campus Arnhall Business Park Westhill, Aberdeenshire, AB32 6FE +31 653997158 Email - dsprangers@shl.nl	MVBO / 233714000	40.2m x 9.0m x 5.0m	13.11.2017	OTW

# Weekly Notice of Operations (WNoO)






## Beatrice Offshore Windfarm Limited

### Construction Operations



Issue Date: 12th February 2018

LF000005-WNO-013: Weekly Notice of Operations - Rev 41

19		Coral Wind / UK	Workboat, UK MCA Cat.2 C-pod deployment	Aberdeen University	Bill Ruck Moray First Marine Ltd Tel 07775 802963 bill@moraymarine.com	2EMX8 / 235086491	14 x 5.1 x 1.2m	08.01.2018	OWF
20		Waterfall	Workboat, UK MCA Cat.2 C-pod deployment	Aberdeen University	Bill Ruck Moray First Marine Ltd Tel 07775 802963 bill@moraymarine.com	2CBT4 / 235071392	15 x 6m	08.01.2018	OWF
21		Seacat Intrepid	Crew Transfer Vessel / CTV	Seacat Services Ltd	Lea Hurst Marine Manager, Seacat Services Ltd 2 Mariners Way, Cowes, Isle of Wight +44 (0)1983 475315 lea.hurst@seacatservices.co.uk	2HWU6 / 235107284	27 x 10 x 1.5m	25.09.2017	OWF & OFTW
22		Aramis	Dive Support Vessel	Agder Dykk AS on behalf of Nexans AS	Øyvind Haug BEATRICE Installation Engineering Manager Mob: +47 916 27 674 Office: +47 22 88 65 09	LDEH/ 257167000	15.7m x 5m	12.02.2018	OFTW
23		Dvergen	Tender	Agder Dykk AS on behalf of Nexans AS	Øyvind Haug BEATRICE Installation Engineering Manager Mob: +47 916 27 674 Office: +47 22 88 65 09	N/A	5m x 2m	12.02.2018	OFTW